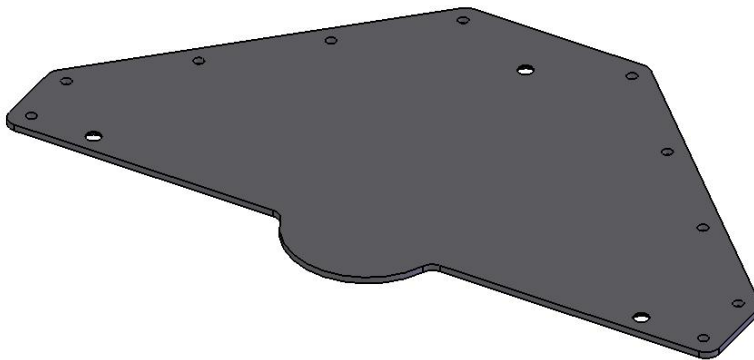


# INSTALLATION INSTRUCTIONS



## WOOD DECK PLATE

### PRO SPA™ & THE SPA LIFT™

MANDATORY – LEAVE THIS MANUAL WITH LIFT OWNER

#### - READ CAREFULLY-

Check entire box and inside all packing materials for parts. Before beginning assembly, read the instructions and identify parts using the figures and parts listed in this document. It is critical that all parts be carefully inspected by the installer prior to installation to ensure that no damage occurred in transit and that a damaged part is not used. Proper installation cannot be overstressed, as an improper installation voids Aqua Creek's warranty and may affect the safety of the user.



9889 GARRY MORE LANE  
MISSOULA, MT 59808  
1-888-687-3552  
FAX: 406-549-2602



## WARNING

**INSTALL THE WOOD DECK PLATE ONLY ON WOOD DECKS THAT ARE ABLE TO SUPPORT HEAVY LOADS. INSPECT THE DECK FOR LOOSE OR ROTTEN BOARDS, POSTS OR JOISTS AND REPLACE OR REINFORCE BEFORE INSTALLING THE WOOD DECK PLATE. THE SURROUNDING DECK JOISTS AND DECKING MUST BE PROPERLY REINFORCED AS SHOWN IN THESE INSTRUCTIONS. AQUA CREEK PRODUCTS DOES NOT GUARANTEE NOR IS LIABLE FOR ANY WOOD DECK INSTALLATION.**

## **PARTS AND MATERIALS**

---

The WOOD DECK PLATE will arrive with three (3) 1/2" x 1-1/2" flat head screws for mounting the lift to the plate. **THE MOUNTING HARDWARE FOR THE PLATE ITSELF IS NOT INCLUDED DUE TO THE MANY DIFFERENCES IN WOOD DECK CONSTRUCTION.** The following hardware, tools and additional material will be required for this installation:

### **HARDWARE REQUIRED**

- (20) 3/8" FLAT WASHERS, STAINLESS STEEL
- (10) 3/8" LOCKING NUTS, STAINLESS STEEL
- (4) 3/8" x 4" HEX BOLTS, STAINLESS STEEL
- (6) 3/8" STAINLESS STEEL HEX BOLTS (SEE NOTE)
- (?) 8-PENNY GALVINIZED NAILS (QTY AS NEEDED)

NOTE: The last 6 hex bolts will go through the joists/braces so they will need to be long enough to be installed with nuts and washers underneath. Use the following formula to calculate the length of these (6) bolts.

$$\text{BOLT LENGTH} = 1\text{-}1/2" + (\text{DECKING THICKNESS}) + (\text{JOIST WIDTH})$$

Therefore, if your decking is 1" thick and you have 2X6 joists (5-1/2" wide), the bolts will need to be  $1\text{-}1/2" + 1" + 5\text{-}1/2" = 8"$  long. Round the number up to the colsest half-inch so that the bolts will be a common (available) size. So if the number comes out to be 7-3/8" use 7-1/2" bolts.

### **TOOLS REQUIRED**

- |                        |                            |
|------------------------|----------------------------|
| HAMMER                 | TAPE MEASURE               |
| ELECTRIC DRILL         | MARKING PEN/PENCIL         |
| 7/16" DRILL BIT, LONG* | 9/16" SOCKET OR WRENCH (2) |

\*THE DRILL BIT WILL NEED TO BE LONG ENOUGH TO GO THROUGH THE DECKING AND THE JOIST, SO IT WILL NEED TO BE LONGER THAN THE (6) BOLTS DESCRIBED ABOVE.

### **ADDITIONAL MATERIAL REQUIRED**

- (1) 3/4" PLYWOOD (CDX OR MARINE GRADE) 2' x 4' (approximate)
- (1) 2x? x 10' LUMBER (SAME SIZE AS YOUR DECK JOISTS)\*\*
- (1) TUBE CONSTRUCTION ADHESIVE

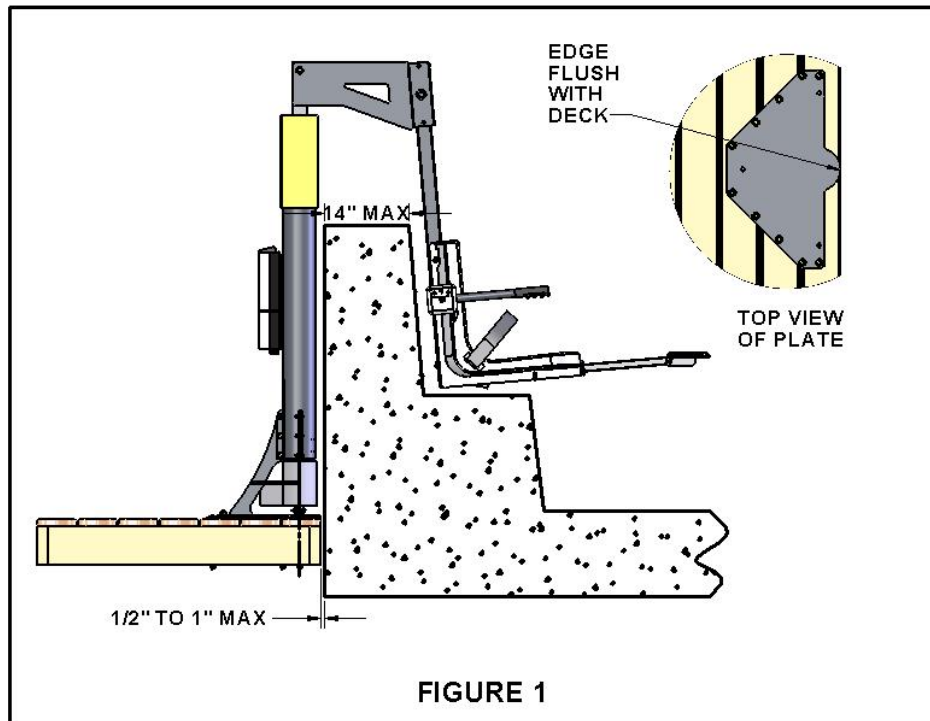
\*\*THE BRACES ADDED WILL BE THE SAME WIDTH AS THE DECK JOISTS. ONE 10' LENGTH SHOULD BE ENOUGH FOR THE ENTIRE INSTALLATION.

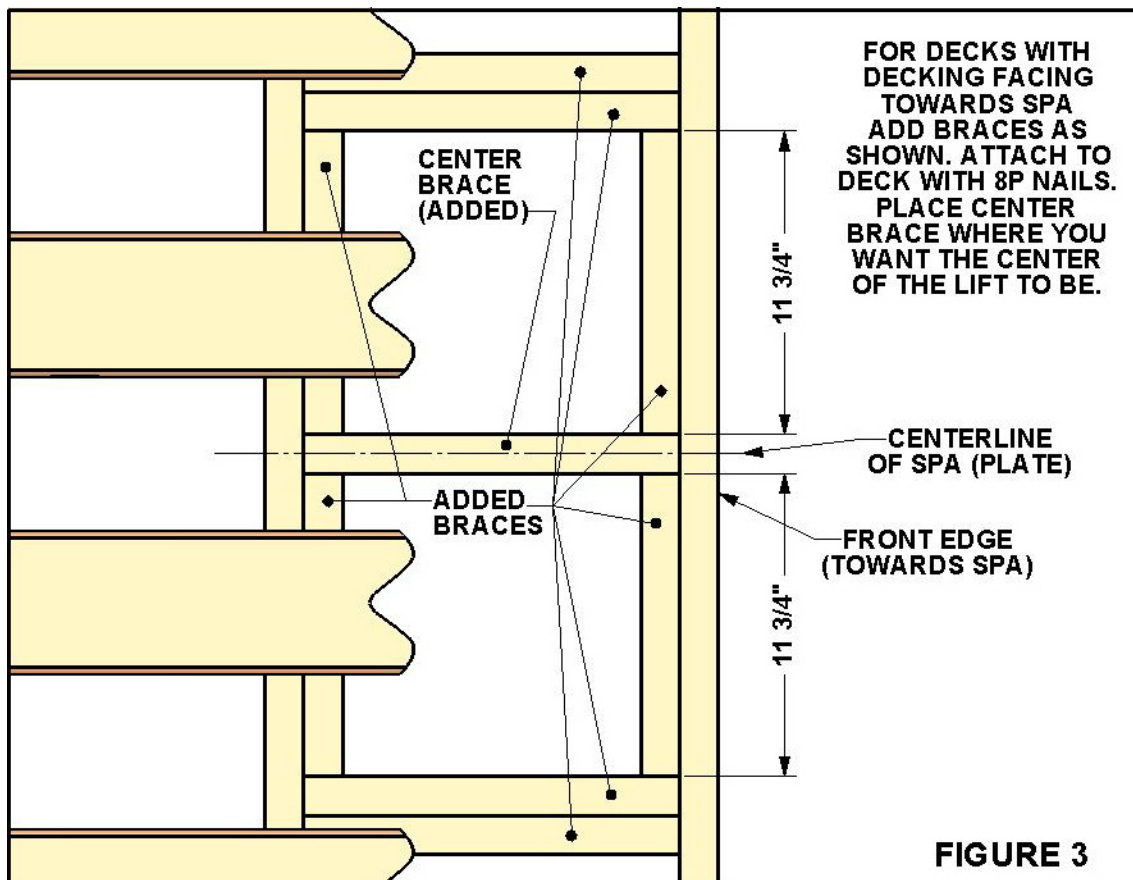
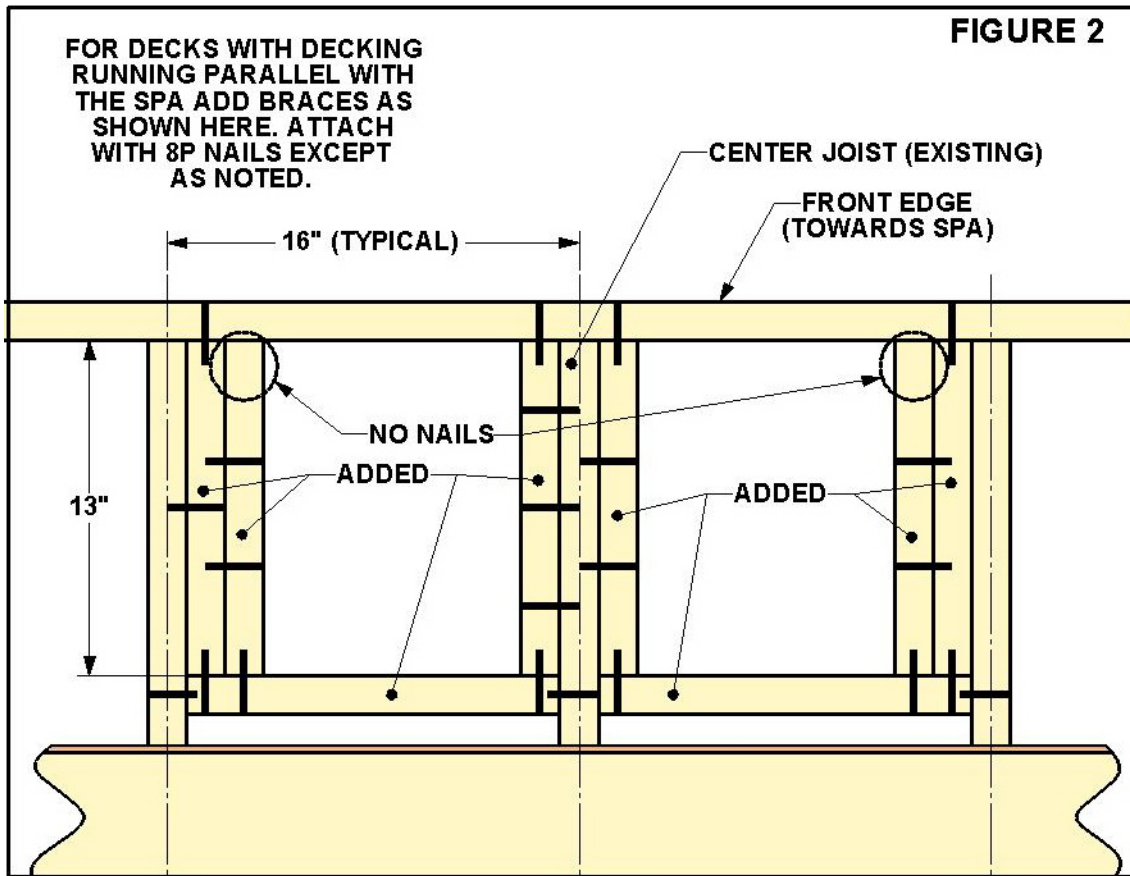
## INSTALLATION INSTRUCTIONS

1. Find the desired location of the lift. **NOTE: The Wood Deck Plate should be centered over a joist. If the desired location does not have a center joist, it is recommended that one be installed.**
2. In most cases the WOOD DECK PLATE will be mounted as close to the spa as possible, without hanging over the edge of the deck. Therefore the front, rounded edge of the WOOD DECK PLATE will be flush with the front edge of the deck, as shown in **FIGURE 1**.

**NOTE: For walls less than 14", the setback may be increased, but it is recommended that the lift be installed as close to the wall as is practical. In most cases the front edge of the WOOD DECK PLATE should be flush with the front edge of the deck.**

3. Reinforce the decking as shown in **FIGURE 2** or **FIGURE 3**, depending on which way the decking is running relative to the spa. Attach all reinforcing braces or joists with 8-penny nails except as noted. Areas that will have through-bolts can't have nails that will interfere with drilling and bolting. Use construction adhesive for these areas and allow the adhesive to cure before installing the WOOD DECK PLATE. Also attach two pieces of  $\frac{3}{4}$ " plywood to the underside with construction adhesive as shown in **FIGURE 5**.
4. Place the deck plate at the desired location and mark the eleven anchor bolt hole locations.
5. Drill a  $\frac{7}{16}$ " diameter hole at the eleven marked locations in step 4.
6. Mount the deck plate to the deck surface using ten (4)  $\frac{3}{8}$ " X 4" hex head bolts, one (6)  $\frac{3}{8}$ " X 8" hex head bolt (through center joist), twenty (20)  $\frac{3}{8}$ " flat washers, and ten (10)  $\frac{3}{8}$ " locking nuts. **FIGURE 4**.





**FIGURE 3**

**FIGURE 4**

PLACE WOOD DECK PLATE ON THE DECK CENTERED OVER THE MIDDLE JOIST (BRACE) AND MAKE SURE THE FRONT EDGE IS PARALLEL WITH THE FRONT OF THE DECK. DRILL STRAIGHT DOWN USING THE PLATE AS A GUIDE OR MARK THE HOLES AND DRILL AT MARKS. INSTALL BOLTS AS SHOWN.

