

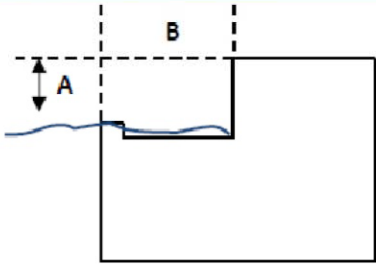
Pool / Spa Profile Guide

Use this guide to aid you in taking site measurements. Accurate site measurements are required in order to verify that the lift you want is going to work for your application. Please be as accurate and thorough as possible. If you do not see a profile that closely matches your pool profile, please draw your own profile and complete the appropriate measurements. Fax or email completed Profile Guide

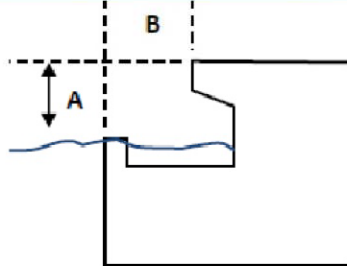
F: 813-388-4441 E: info@poolsandstuff.com



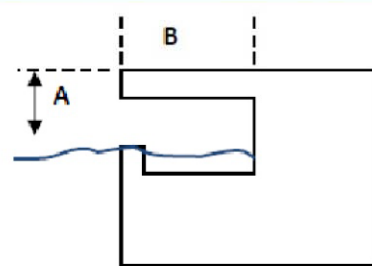
① Roll Out Profile



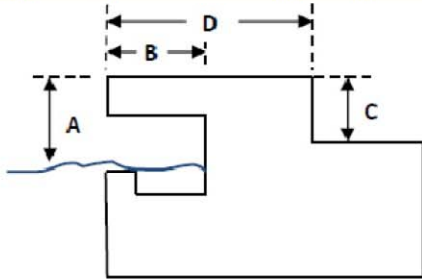
② Partially Recessed Profile



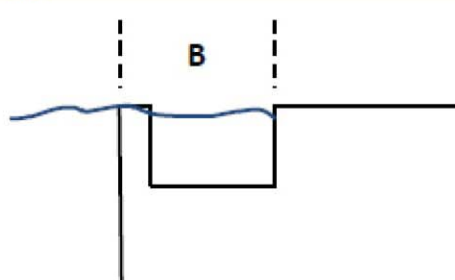
③ Fully Recessed Profile



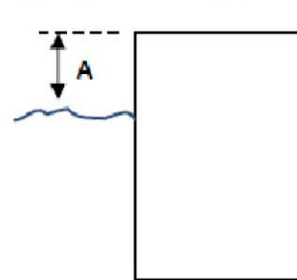
④ Fully Recessed w/Parapet



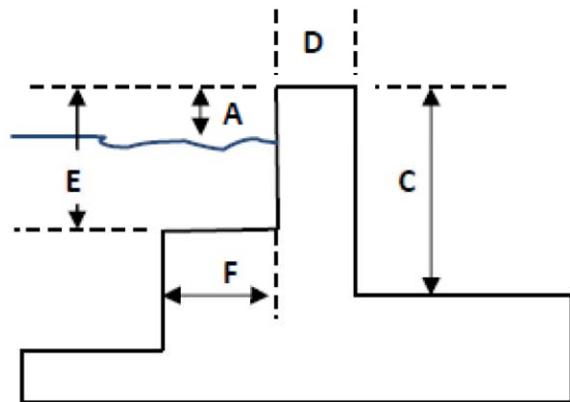
⑤ Flush with Deck Profile



⑥ Squared Edge Profile



⑦ Raised Pool/Spa Profile



PROFILE #	_____		
POOL TYPE:	<input type="radio"/> Commercial	<input type="radio"/> Residential	
DECK MATERIAL:	<input type="radio"/> Concrete	<input type="radio"/> Wood	<input type="radio"/> Other
MEASUREMENTS:	_____		
A = Deck to Water	_____	Inches	
B = Gutter width	_____	Inches	
<i>If Applicable:</i>			
C = Height of Parapet (Curb/Wall)	_____	Inches	
D = Width of Parapet (Curb/Wall)	_____	Inches	
E = Spa Seat Depth (Top of wall to seat)	_____	Inches	
F = Spa Seat Width	_____	Inches	
Floor to ceiling measurement	_____	Inches	



QUESTIONS? Call Aqua Creek @ (888) 687-3552 or (406) 549-0769