

INSTALLATION AND OPERATING INSTRUCTIONS



RANGER™ **ADA COMPLIANT POOL LIFT** 300 LB. [136 kg] MAXIMUM CAPACITY MANDATORY – LEAVE THIS MANUAL WITH LIFT OWNER

- READ CAREFULLY-

Check entire box and inside all packing materials for parts. Before beginning assembly, read the instructions and identify parts using the figures and parts listed in this document. It is critical that all parts be carefully inspected by the installer prior to installation to ensure that no damage occurred in transit and that a damaged part is not used. If any damage occurred in transit, Aqua Creek Products, LLC must be notified within three days of receipt of unit. Proper installation cannot be overstressed, as an improper installation voids Aqua Creek's warranty and may affect the safety of the user.



The Total Solution for Pool and Spa Access

9889 GARRYMORE LANE
MISSOULA, MT 59808
1-888-687-3552
FAX: 406-549-2602



WARNING

IMPORTANT SAFETY INSTRUCTIONS

- 1. READ AND FOLLOW ALL INSTRUCTIONS. LIFT SAFETY CAN ONLY BE ENSURED IF THE LIFT IS INSTALLED AND OPERATED PROPERLY – ACCORDING TO THESE INSTRUCTIONS.**
- 2. WARNING- TO REDUCE RISK OF INJURY, DO NOT PERMIT CHILDREN TO USE THIS PRODUCT UNLESS THEY ARE CLOSELY SUPERVISED AT ALL TIMES.**
- 3. WARNING- DO NOT PERMIT CHILDREN TO PLAY ON THIS PRODUCT.**
- 4. WARNING- NEVER APPLY DIRECT WATER PRESSURE TO ELECTRONIC COMPONENTS.**
- 5. DO NOT USE THE RANGER™ LIFT FOR WATER-DRAFTS OVER 12" (DECK TO WATERLINE).**
- 6. NEVER OPERATE THIS LIFT UNDER LOAD WITH NO WATER (DRY POOL).**
- 7. SAVE A COPY OF THESE INSTRUCTIONS.**

©AQUA CREEK, LLC 2010

OCT. 2010

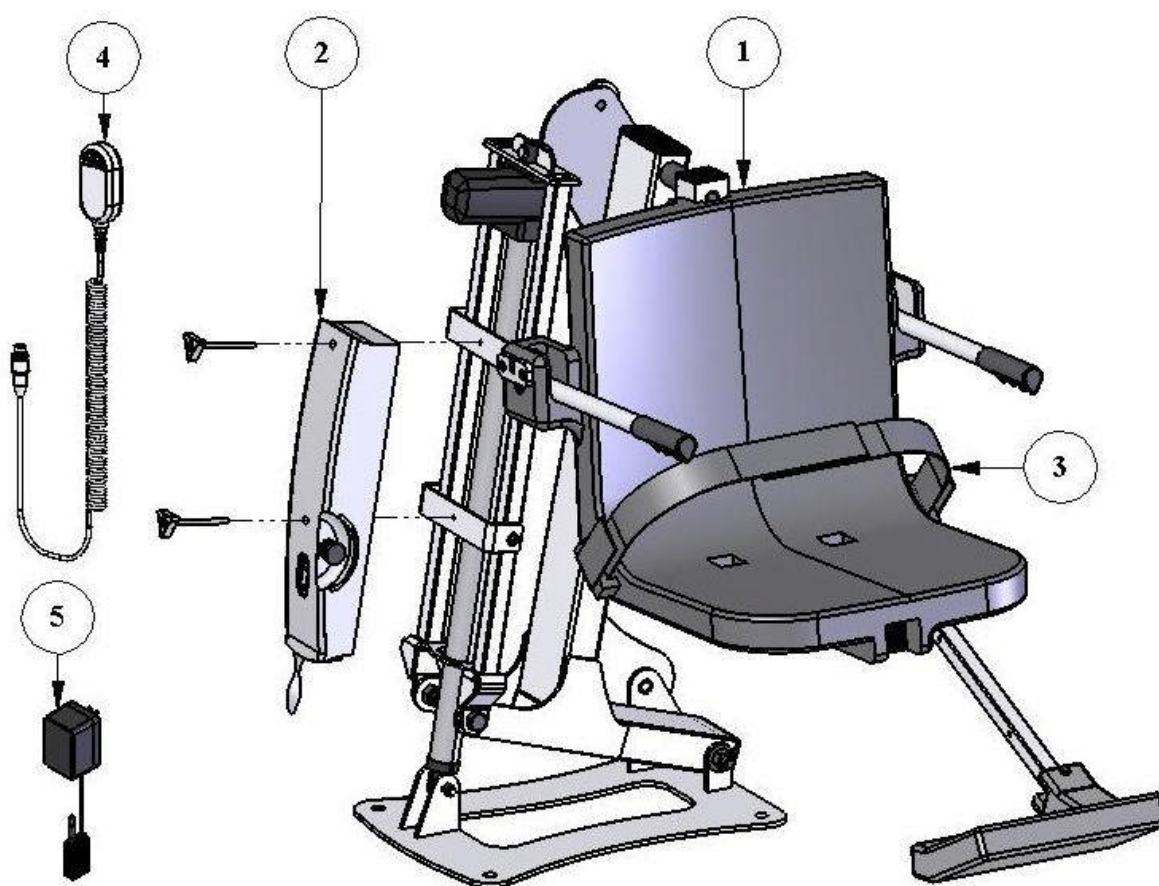
RANGER™ POOL LIFT

TABLE OF CONTENTS

<u>PAGE</u>	<u>DESCRIPTION</u>
3	PACKING LIST
4	SITE AND POOL DECK REQUIREMENTS
5-6	CORE-DRILL RETROFIT INSTRUCTIONS
7	SAW-CUT RETROFIT INSTRUCTIONS
8	NEW-CONSTRUCTION INSTRUCTIONS
9	RANGER™ LIFT ASSEMBLY INSTRUCTIONS
10	24V BATTERY OP & INSTALL INSTRUCTIONS
11	BATTERY MAINTENANCE
12	RANGER™ LIFT OPERATING INSTRUCTIONS
13-14	SAFETY & CARE FOR YOUR LIFT
15-17	TROUBLESHOOTING GUIDE
18	RANGER™ PARTS LIST
19	SEAT ASSEMBLY PARTS LIST
20	WARRANTY

THE RANGER™ POOL LIFT

1. RANGER™ POOL LIFT W/ FOOTREST
2. INTEGRATED CONTROL BOX/BATTERY
3. SAFETY BELT
4. HANDSET REMOTE
5. BATTERY CHARGER



NOTE: The RANGER™ POOL LIFT requires either a concrete anchor system (item F-433PP4A) or an anchor system for wood decks (item F-40220) sold separately.

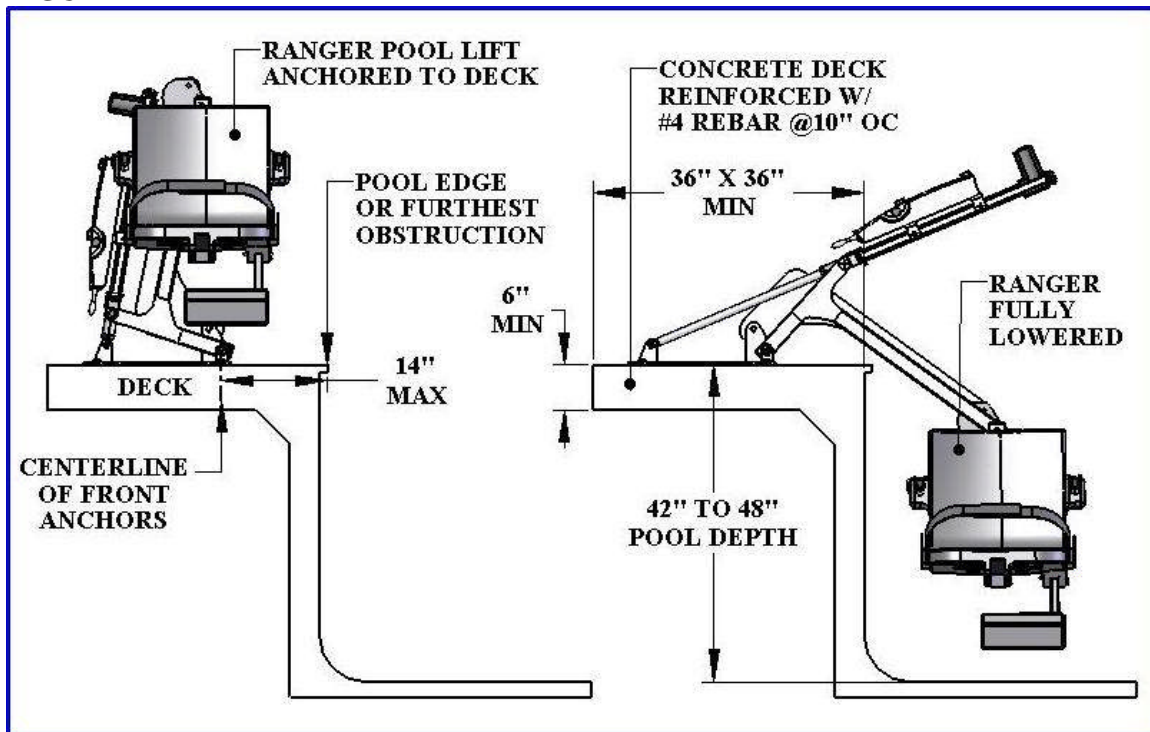
NOTE: These instructions outline the installation of a standard concrete anchor. Instructions specific to the WOOD DECK anchor are provided with that product.

SITE & POOL DECK REQUIREMENTS

This lift is designed for commercial or residential use on in ground pools and spas. This lift is not designed to clear a wall or obstacle. The lift should be installed on the pool deck where a straight linear section of the pool wall is at least six (6) feet long. The lift should be installed at a pool depth (pool deck to pool floor) of no less than 42" but not more than 48 inches. If the edge of the pool deck curves the anchor system will need to be anchored differently than what these instructions outline; contact Aqua Creek Products for assistance in this case. The front anchors of the lift need to be mounted a maximum of 14 inches and no closer than 4 inches from the inside pool wall. If your pool or spa has hand rails or other extensions on the inside of the pool wall, the set back distance must take these into account. Contact Aqua Creek Products for assistance in these types of applications.

In order to properly install this anchor system into an existing pool deck, your pool deck **MUST** be at least 3 feet long, by three feet wide and 6 inches thick. It must also be reinforced with #4 rebar on 10 inch centers in both directions. There may be instances where your existing pool deck may not be structurally sound enough or does not meet the minimum requirements outlined above for the safe installation of this anchor system. In those circumstances Aqua Creek recommends that you follow the Saw Cutting Retro-fit Instructions on page 7. If you are installing this lift in a new application where the pool deck has not been poured yet, then go to the New Construction instructions on page 8.

FIGURE 1



CORE DRILLING RETRO-FIT INSTRUCTIONS

Required Materials & Tools:

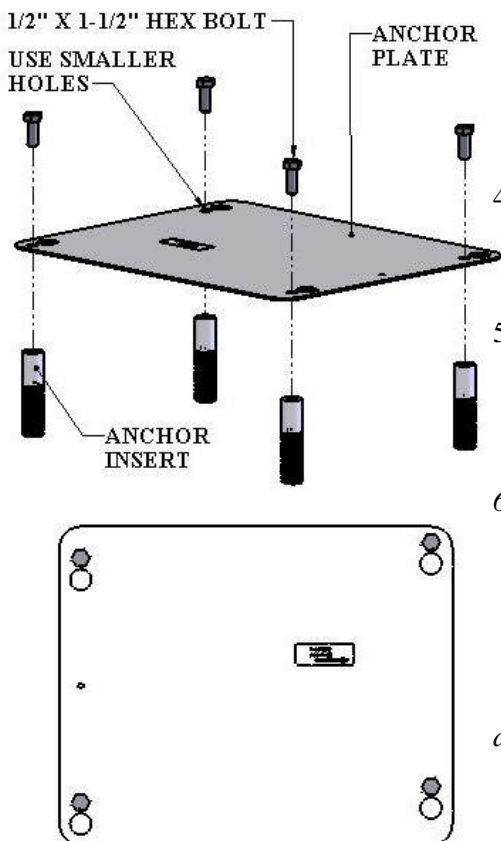
- Core drill and 1 1/4" core drill bit
- Tape Measure
- Marking Pen suitable for writing on concrete
- Hammer
- Cold Chisel
- Torpedo Level
- High Strength 2 part construction epoxy*
- Black electrical tape (Optional)
- Masking tape



*Aqua Creek recommends either Hilti™ Brand HIT HY-150 or Simpson™ brand ET22 Strong Tie or equivalent

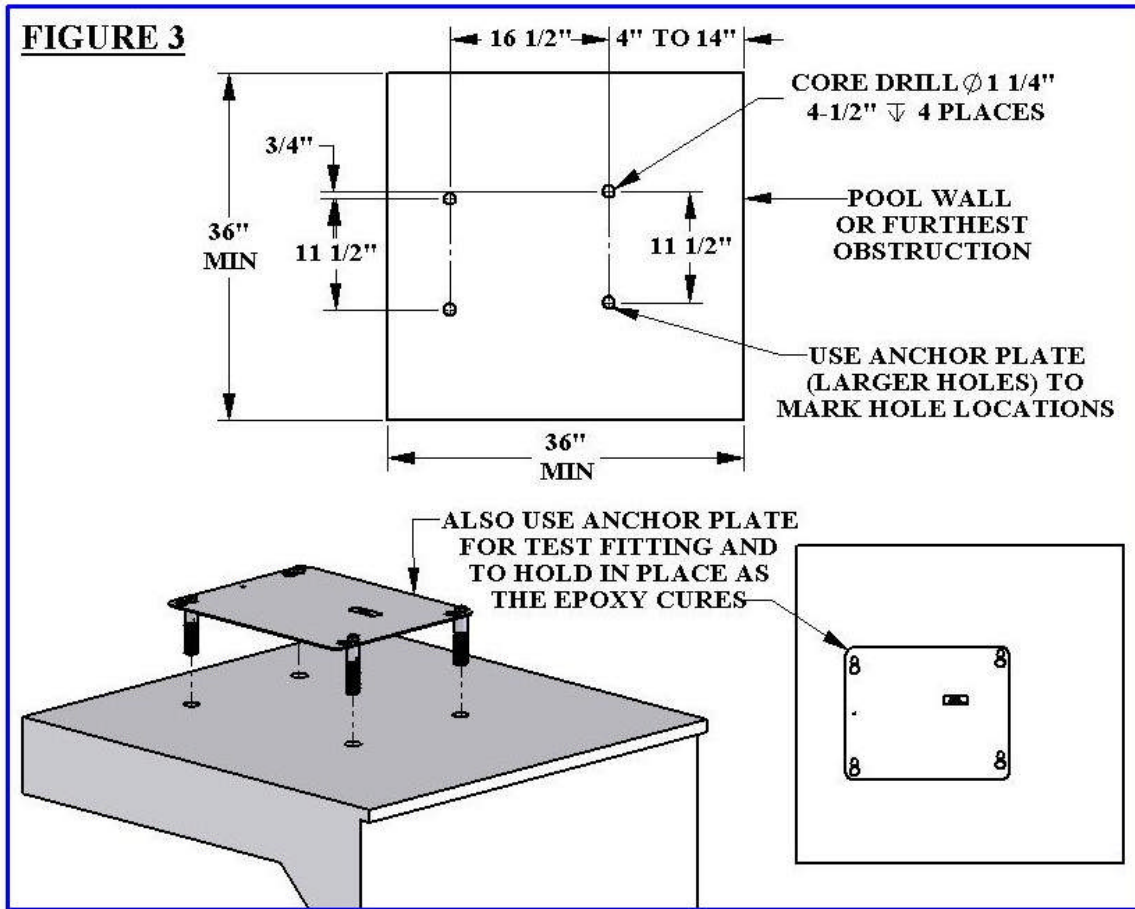
- 1) Locate the anchor plate, four (4) anchor inserts with nuts and mounting hardware. (Sold separately, part number F-433PP4A - See picture).
- 2) Using the larger holes in the anchor plate as a template, mark the four hole locations with a marking pen on the pool deck. Verify that the **CENTER LINE** of the front anchors are no more than 14 inches from the pools edge. See **FIGURE 1, page 4**.
- 3) Using the core drill and the 1 1/4" core drill bit, drill out the four hole locations marked on the pool deck to a depth of about 4 1/2".
 - a. **NOTE:** You can use black electrical tape on the end of the drill bit as a visual marker to indicate the proper depth that you need to drill to.

FIGURE 2



- b. **NOTE:** Depending on your local grounding requirements, you may need to drill one hole larger than the others so that you can ground at least one of the anchor inserts. In some cases saw cutting a portion of the deck out completely might be required. In this case, follow the "Saw Cutting Retro-Fit Instructions".
- 4) Remove the core from the holes using a hammer and chisel. The holes should be completely dry and clear of any debris before installing the anchors into them.
- 5) Remove the nuts from the threaded anchor inserts and the black protective cover from the end of the anchor insert exposing the internal threads that will accept the mounting hardware.
- 6) Using the smaller holes in the anchor plate, thread the mounting hardware through the anchor plate holes and into the ends of the four anchor inserts so that the tops of the inserts are flush with the **BOTTOM** of the plate (see diagram on left). **IMPORTANT:** Use the enclosed packet of anti seize on the threads of the hardware to prevent the hardware from seizing in the anchor inserts.
 - a. **NOTE:** It is recommended that you apply tape to the bottom of the anchor plate around the holes so that when and if the two part epoxy oozes out of the holes that it does not secure the anchor plate to the pool deck.

- 7) Allow for a way to ground at least one of the anchor inserts according to your local code requirements.
- 8) Before putting epoxy into the holes and setting the anchor inserts, you will want to test fit the anchor inserts in the pre-drilled holes first to make sure they line up properly. You can do this by picking up the anchor plate with the four (4) anchor inserts attached to the underside and carefully place them into the four holes drilled in the deck. Using a torpedo level on the plate, verify that you can level up the anchor system. If they do not line up you may have to enlarge your holes.
- 9) After verifying that the anchor inserts line up with the holes properly and you can level the anchor assembly, remove the anchor assembly and fill each hole in the pool deck at least half full of two part construction epoxy (not included). *Aqua Creek recommends either Hilti™ Brand HIT HY-150 or Simpson™ brand ET22 Strong Tie or equivalent.*
- 10) Pick up the anchor assembly with the four (4) anchor inserts attached to the underside and carefully place them into the four holes drilled in the deck. As you place the anchor inserts that are attached to the anchor plate, wiggle the anchor system a little to make sure the epoxy gets on all sides of the anchor inserts.
- 11) Once the anchor inserts are placed into the holes, use a small torpedo level on the anchor plate to make sure you are level and plumb.
- 12) Allow the epoxy to set up according to the manufacturers recommendations and remove the hardware and the anchor plate. You can now safely mount the lift to the anchor system using the same hardware you used to mount the anchor inserts to the underside of the anchor plate. The anchor plate can be recycled or used for installing a second set of anchors in another location.



SAW-CUTTING RETRO-FIT INSTRUCTIONS

Required Materials & Tools:

- Concrete saw with Diamond blade
- Tape Measure
- 4' long Straight edge or chalk line
- Sledge Hammer
- Cold Chisel
- Torpedo Level
- Sting line
- Concrete & Concrete tools
- #4 Rebar

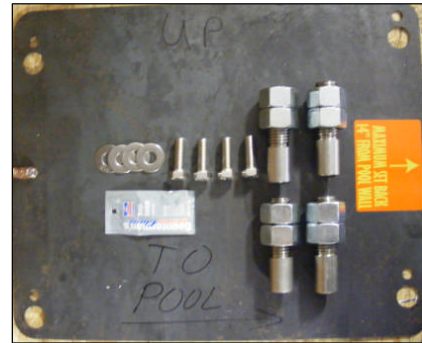


FIGURE 4

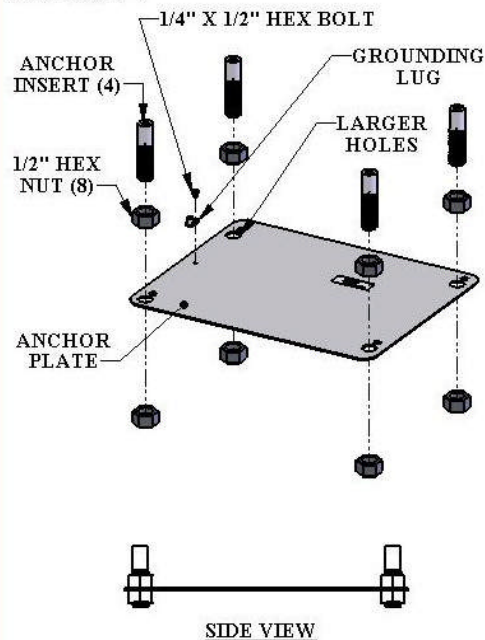
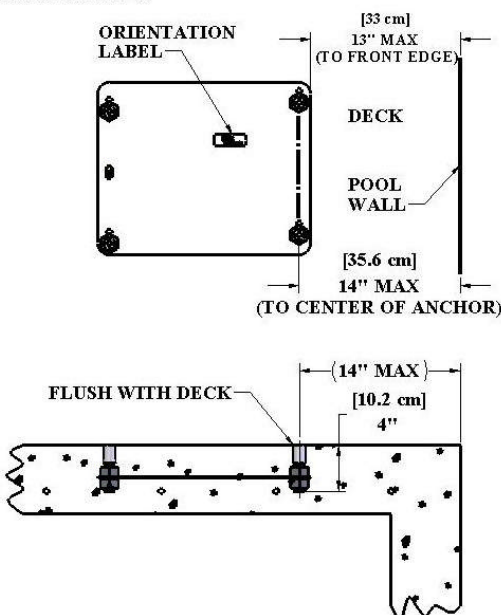


FIGURE 5



- 1) Locate the anchor plate, four (4) anchor inserts with nuts and mounting hardware). (Sold separately from lift, part number F-433PP4A - See picture).
- 2) Mark out a section of the pool deck that you are removing using a chalk line or straight edge and a marker. You should plan on removing at least a Three foot by three foot section.
- 3) Using the saw with the diamond blade, make your cuts along the lines that you marked.
- 4) Using the sledge hammer, break up the concrete within the area that you cut and remove the pieces.
- 5) After you have removed the portion of the deck, verify that your new deck will be able to be at least 6 inches deep.
- 6) Remove ONE of the nuts from each of the anchor inserts and place the anchor inserts through the larger holes in the anchor plate. Thread the nut back on the other side of the anchor insert so that the anchor plate is sandwiched between the nuts. (See diagram on left).
- 7) Install rebar in the open area of the deck. Tie the rebar into the existing deck if possible.
- 8) Set the anchor system in place making sure that the center line of the front anchor inserts are no more than 14 inches away from the pools edge.
- 9) Using the string line or a straight edge, make sure the top of each anchor body is level and flush with the **FINISHED** deck surface. Each anchor body can be adjusted individually by turning the nuts with a large wrench.
- 10) Ground the anchor system using the grounding lug on the anchor plate according to your local code requirements.
- 11) Pour your concrete and finish the pool deck surface.
- 12) Once the concrete has cured, install the lift by aligning the holes in the lifts base with the anchors installed in the deck. Secure the lift to the deck using the stainless steel hardware that comes with it. (See drawing below)
 - a. *NOTE: Use Anti Seize on the hardware to prevent the hardware from seizing in the anchor inserts.*

ANCHOR INSTALLATION: NEW CONSTRUCTION

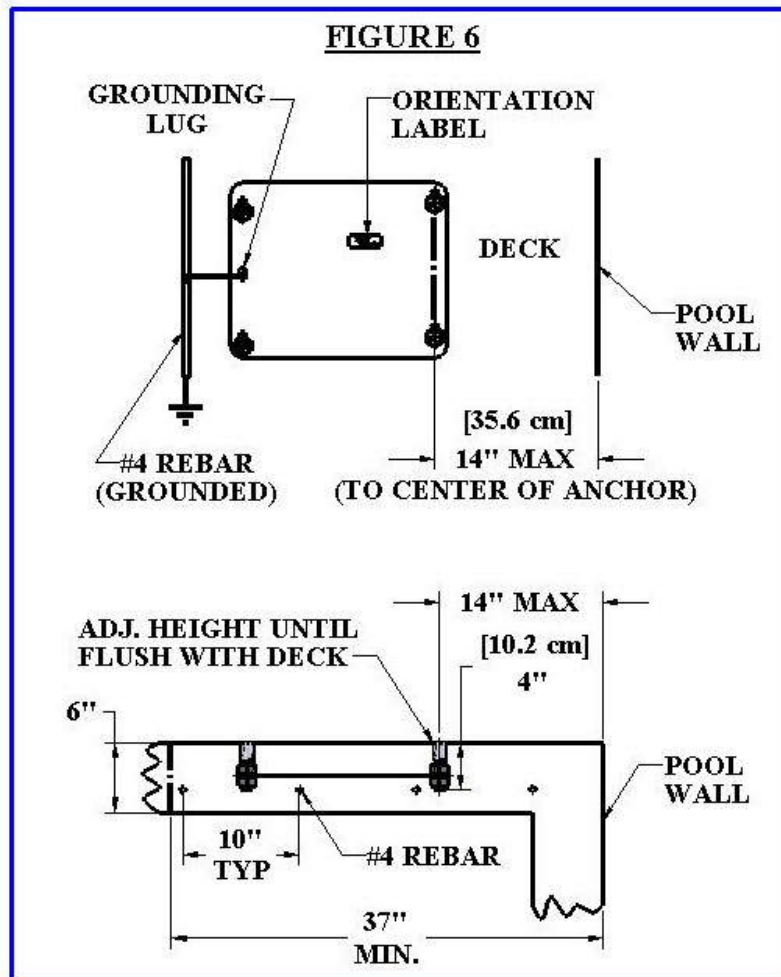
For installations where a new deck is being poured, or where a dedicated pad is being poured just for the pool lift, the concrete must satisfy the requirements outlined on page 4. For convenience here are the requirements again;

YOUR POOL DECK MUST BE AT LEAST 3-FEET LONG BY 3-FEET WIDE BY 6-INCHES THICK. IT MUST BE REINFORCED WITH #4 REBAR ON 10-INCH CENTERS IN BOTH DIRECTIONS.

Obviously you may make the deck larger than this – which is almost always the case when putting in a deck that surrounds the pool. Note that the entire deck does not need to be 6" thick, but that the area around the installed lift, 3' by 3', should be 6" thick at a minimum. The rest of the deck may be thinner – 4" is typical – as long as it is 6" thick around the lift.

The entire deck should be reinforced with #4 rebar on 10" centers in both directions, which is also common for this type of structure. Our minimum requirement is that the 3' by 3' section be reinforced accordingly, but it is good practice to extend the rebar grid over the entire deck. Commonly, the rebar grid is used for grounding/bonding also. Grounding of the lift can usually be accomplished with a length of bare, solid, copper wire, 14 or 16GA, wrapped tightly around a piece of the rebar and then connected to the grounding lug on the anchor plate. Note that this is only effective when the rebar grid itself has been grounded.

CHECK YOUR LOCAL ELECTRICAL CODE: GROUNDING REQUIREMENTS FOR POOL EQUIPMENT. ALWAYS GROUND THE UNIT PER LOCAL ELECTRICAL CODES.



RANGER™ POOL LIFT - ASSEMBLY INSTRUCTIONS

1. Attach seat belt as shown in FIGURE 7.
2. Install the RANGER™ pool lift onto the four (4) anchors using 1/2 x 1-1/2" stainless steel hex-head bolts and 1/2" stainless steel flat washers. Make sure all bolts are tight before using the lift. (FIGURE 9)
3. Before installing the integrated unit, plug it into the charger and let it charge for 24 hours. Make sure the orange "charge" light illuminates when the battery is being charged.
4. Unplug the integrated unit from the charger and install it as shown in FIGURE 9. Tighten the wing-bolts until snug.
5. Plug the handset cable into the left socket on the bottom of the integrated control box. Also plug the actuator cable into CH1, as shown in FIGURE 8. Be sure you press the cord ends firmly into the sockets until you are sure they are all of the way into the sockets, or else the lift will not operate properly.

WHEN LIFT IS NOT IN USE REMOVE THE CONTROL UNIT AND PLUG IT INTO THE CHARGER. DO NOT LEAVE IT ON THE LIFT WHEN NOT IN USE!

FIGURE 7

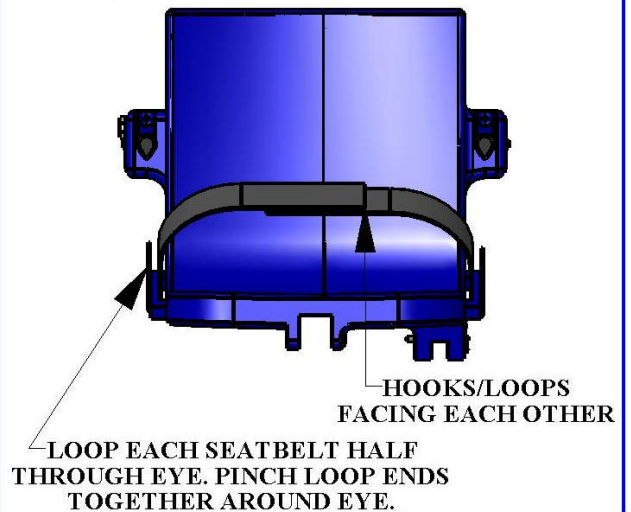


FIGURE 8

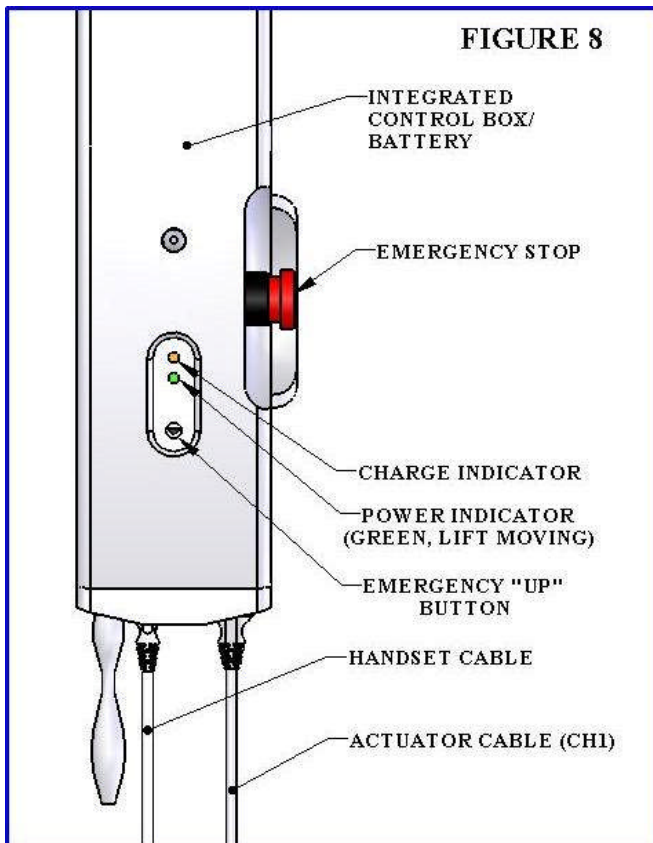
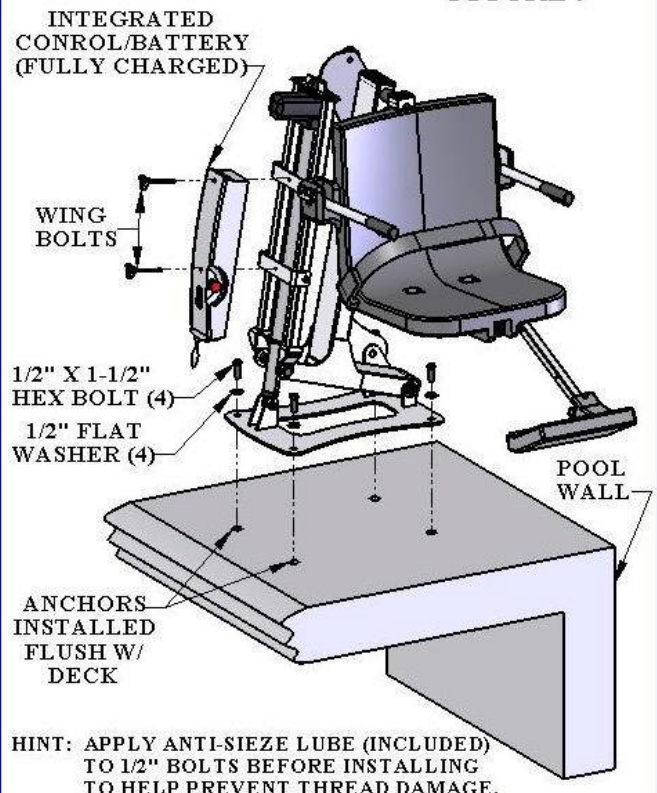


FIGURE 9



WARNING

MAKE SURE THE AREA AROUND THE RANGER™ LIFT IS CLEAR BEFORE OPERATING. NEVER OPERATE THE LIFT WITH ANY PERSON WITHIN THE OPERATING RANGE OF THE LIFT, INCLUDING ON THE DECK OR IN THE WATER. NEVER MOVE THE LIFT DOWN WHILE OVER THE DECK. IF THE LIFT COMES INTO CONTACT WITH THE DECK OR A WALL, RELEASE THE BUTTON IMMEDIATELY OR PRESS THE EMERGENCY STOP BUTTON. DO NOT ALLOW CHILDREN TO OPERATE THE LIFT WITHOUT SUPERVISION. DO NOT ALLOW CHILDREN TO PLAY ON OR AROUND THE LIFT AT ANY TIME.

CHECK ALL NUTS AND BOLTS FOR TIGHTNESS AND FOR WORN PARTS BEFORE EACH USE.

USING THE “EMERGENCY STOP BUTTON”

On the side of the integrated control box is a large red button. If you depress the “EMERGENCY STOP” button, this will bypass the handset and stop the lift. The button will lock in place until released. To release the EMERGENCY STOP button and resume operation, turn the button counter-clockwise until it pops out.

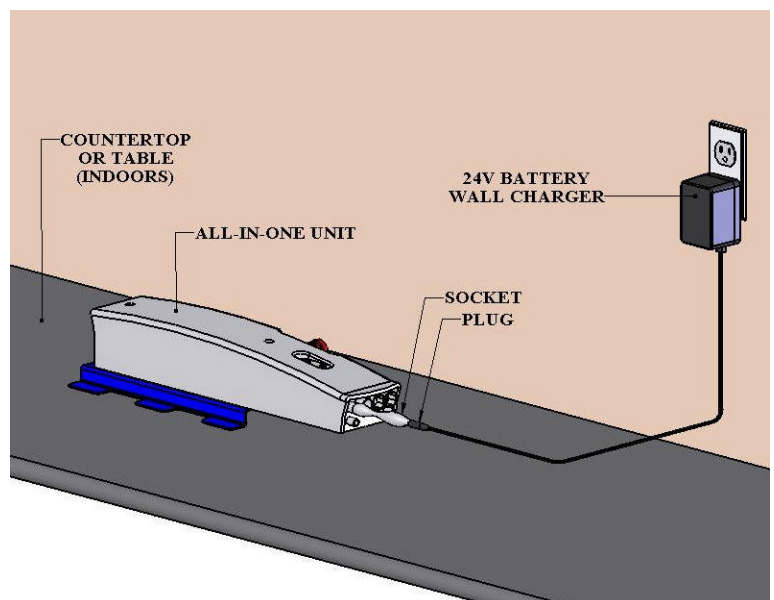


THE LIFT WILL NOT FUNCTION AGAIN UNTIL THE EMERGENCY STOP BUTTON IS RELEASED!!

CHARGING THE BATTERY:

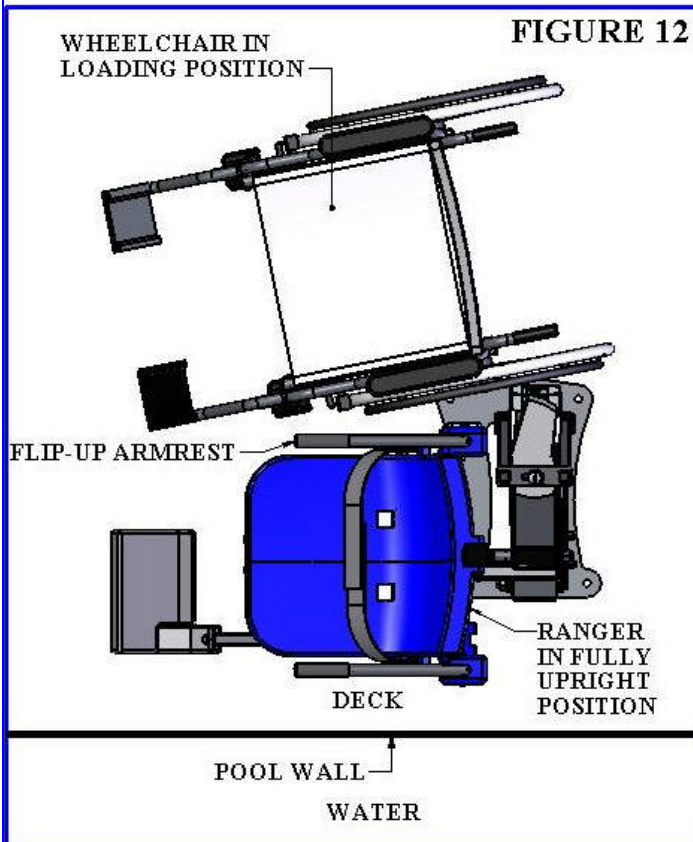
Before using the RANGER™ Lift for the first time the 24V INTEGRATED CONTROL BOX must be fully charged. This will take about 24 hours on the charger. It is also recommended that the battery be fully charged before each use. **DO NOT LEAVE IT ON THE LIFT!!!**

To recharge the battery, unplug all cables and remove the INTEGRATED CONTROL BOX from the lift. Plug the INTEGRATED CONTROL BOX into the charger as shown. When the charger is plugged in the orange **CHARGE** light will flash. When the battery is fully charged, the **CHARGE** light will **stay on** and the device is ready to use.



WARNING! MAKE SURE THE EMERGENCY STOP BUTTON IS NOT DEPRESSED OR THE UNIT WILL NOT CHARGE!

RANGER™ POOL LIFT OPERATING INSTRUCTIONS:



NOTE: CHECK ALL NUTS & BOLTS FOR TIGHTNESS AND FOR WORN PARTS BEFORE EACH USE. **NEVER OPERATE THE LIFT WITH THE ARMRESTS FLIPPED UP.**

LOADING FROM A WHEELCHAIR:

The RANGER™ Pool Lift should always be in the fully upright position when transferring into the chair. Before transferring, check to make sure the lift is operating by making a short test run: move the chair at least part way in and out of the pool.

The armrest on either side will flip up to allow for easier lateral transfers. Transfer into the chair and then lower the flip-up armrest back into its normal position. Secure the adjustable lap belt around the waist so that the belt is snug, but not uncomfortably tight.

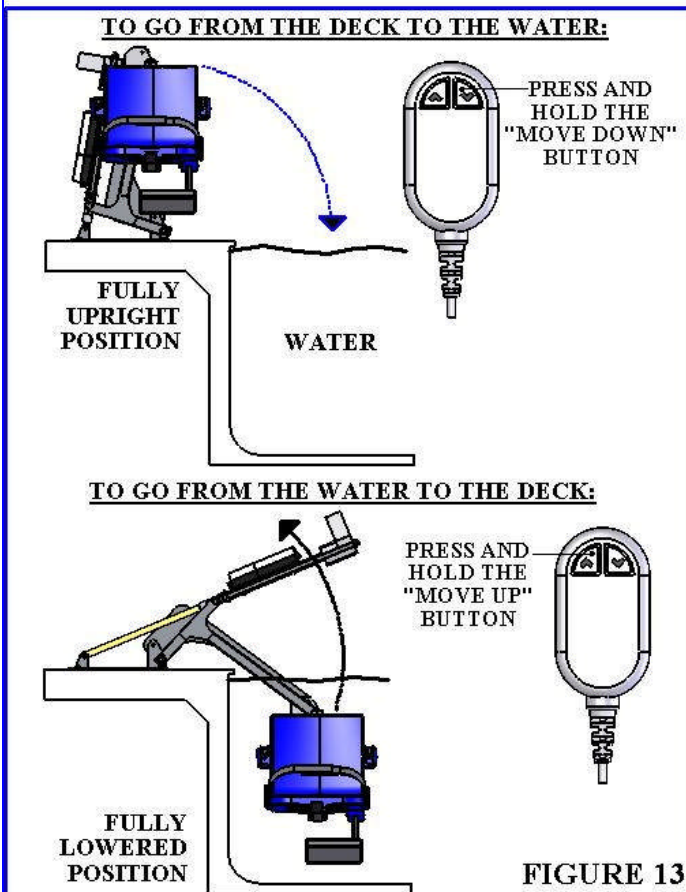
OPERATING THE RANGER™ POOL LIFT:

The HANDSET CONTROL is used to raise and lower the lift during operation. To lower the chair

into the pool, press and hold the ▼ “MOVE DOWN” button (see diagram to the left). The lift will move “DOWN” towards the water as long as the ▼ “MOVE DOWN” button is pressed. To stop moving, simply release the button. To “MOVE UP” back to the fully upright position, press and hold the ▲ “MOVE UP” button. Again, the lift will move only as long as the button is pressed and held.

When you are sufficiently submerged into the water, release the ▼ “MOVE DOWN” button. Now remove the lap belt by grasping the end of the belt that is protruding above the lap belt and tugging gently. To create more room in front of the chair, the footrest may be flipped inwards, under the chair. Exit the chair by sliding straight forward until you are clear of the seat and the footrest.

When you are ready to return to the lift, make sure that the chair is lowered (submerged) sufficiently to allow you to easily slide into the chair. Next, re-secure the adjustable lap belt snugly around your waist. Raise the chair out of the pool by pressing and holding the ▲ “MOVE UP” button, until the lift is once again fully upright.



SAFETY & MAINTENANCE INSTRUCTIONS

DO NOT PLAY ON OR AROUND THIS LIFT

1. Check the RANGER™ Pool Lift before each use to assure there are no worn parts and that all hardware is properly tightened. If there are any worn parts, replace them BEFORE using the RANGER™ Pool Lift. You can call our customer service at 1-888-687-3552 to order any parts.
2. Aqua Creek Products, LLC lifts shall be grounded per local codes.
3. At least ONCE A WEEK, the RANGER™ Pool Lift must be cleaned with fresh water. Do not spray the RANGER™ Pool Lift 24v battery unit directly with any pressure. Wipe all surfaces clean with a damp, non-abrasive cloth. When cleaning the RANGER™ Pool Lift, use non-abrasive soap and water. Avoid harsh chemicals and disinfectants.
4. Always read the label instructions on any cleaner carefully before applying it to a surface.
5. The WARNING & INTENDED USE labels on the RANGER™ Pool Lift must be maintained in readable fashion. If they become unreadable or faded, please replace the label immediately. Replacement labels are available from AQUA CREEK PRODUCTS LLC. 1-888-687-3552.

CARE OF YOUR LIFT

Routine cleaning is an absolute necessity to ensure the integrity of the lift. Note that the RANGER™ Pool Lift should not be stored in a pump room or in a storage room where pool chemicals are kept. Storing the lift near pool chemicals may cause rusting and other damage to occur. Your Aqua Creek stainless steel lift is powder coated to protect the stainless steel from rusting. Most rusting will occur at weld points, crevices, under gaskets, rivets or bolt heads.

The choice of a proper cleaning product is up to the consumer and there are many to choose from. Depending on the type of cleaning and the degree of contamination (rusting), some products are better than others. For routine cleaning the products most recommended are gentle soaps or detergents or dilute mixtures of ammonia. For stubborn spots and stains try using soft scrub with some brisk rubbing.

DO NOT USE POOL WATER TO CLEAN USE ONLY FRESH WATER

If the lift is used **DAILY** make sure to wash the lift at the end of the day. Wash the lift off using a mild soap and a soft cloth. Make sure to pay special attention to weld points and crevices. Do not use a bristled brush or steel wool to clean the lift. Check that the lift is working properly and then place the battery on the charger. It is recommended that the battery be charged after every day of use.

If the lift is used **WEEKLY** follow the same steps as above. Also be sure to check all of the contact points (terminals) for damage or corrosion. If you notice corrosion gently clean the terminals. To clean corrosion from the terminals use a q-tip and some rubbing alcohol. If the corrosion is particularly stubborn try using a 3M scotch brite pad, but be careful not to damage the terminals. Apply dielectric grease to the terminals after cleaning them. This will help to prevent further corrosion. Do not leave the battery on the lift. Always store the battery on the charger whenever the lift is not being used.

If the lift is used **MONTHLY** follow the same steps as above. Also check the nuts and bolts to make sure they are securely fastened (this is always a good idea, no matter how often or infrequently the lift is used). Also make sure to store the battery on the charger and not on the lift. Leaving the battery on the lift for extended periods will significantly shorten the battery's lifespan.

If the lift is being **STORED** for an extended period of time follow all of the steps above. Check for rusting at all crevice and weld points. If you notice rusting spray some WD-40 on the affected area and take a 3M scotch brite pad and rub briskly. Afterwards be sure to wash and rinse the lift again with soap and water. When storing the lift make sure it is in a dry area and covered. **DO NOT STORE** in or around pool chemicals.

TROUBLESHOOTING GUIDE (RANGER)

First make sure the 24V INTEGRATED CONTROL/BATTERY is fully charged.

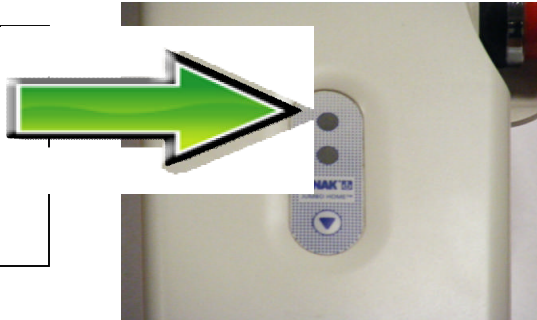
If the lift doesn't move when the handset button is pressed:

When you can't get the lift to move check the following things:

1. Make sure the battery is fully charged:

Unplug the MOTOR CABLE and the ACTUATOR CABLE from the 24V CONTROL BOX. Plug the 24V CONTROL BOX into the charger and look for the **ORANGE** charge light to illuminate on the front of the unit. When the orange light goes from flashing to static-on the battery is fully charged. Make sure the **"EMERGENCY STOP"** button is **NOT** depressed, or else THE BATTERY WILL NOT CHARGE!

When charging the battery the top **orange light** will flash, which means the battery is being charged. When fully charged the orange light will stay on.



THE EMERGENCT STOP BUTTON SHOULD LOOK LIKE THIS



NOT LIKE THIS!!!

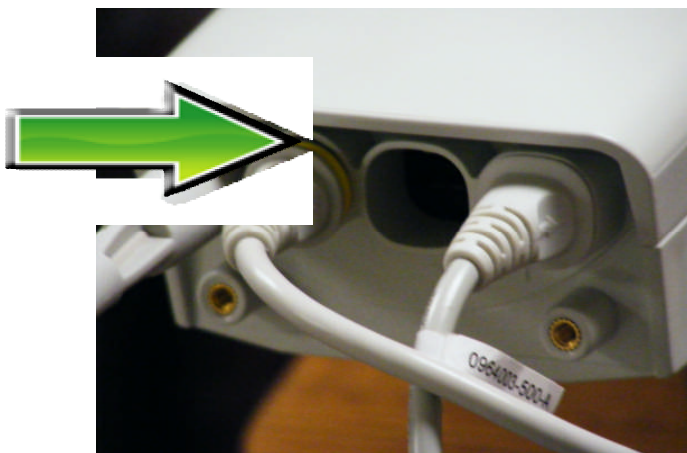
If the battery is fully charged and the lift is not moving then:

2. Check all cords:

- A. Check that the cords are properly plugged in. Start by unplugging the HANDSET and the ACTUATOR from the 24V CONTROL BOX. Once these cords are removed check the ends for corrosion or damage. Plug the HANDSET back in by lining up the slot on the plug to the groove on the front of the jack. Note that these cords require some force to plug them in fully. You will know they are correctly inserted when the cords are fully seated as shown below. When fully seated the **YELLOW** O-ring will not show. Make sure you do this for both cords. Also make sure the cords themselves are undamaged.



LINE-UP THE SLOTS AS SHOWN AND PRESS IN UNTIL FULLY SEATED



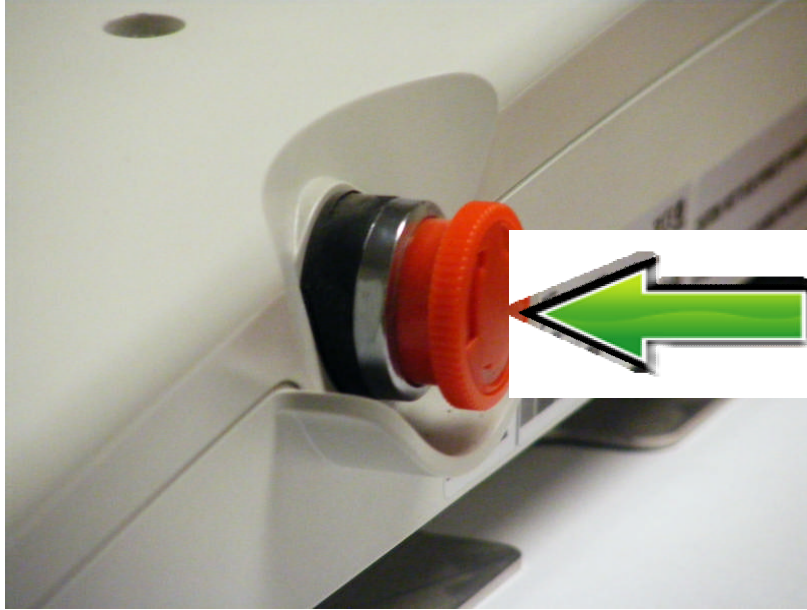
NOT FULLY SEATED



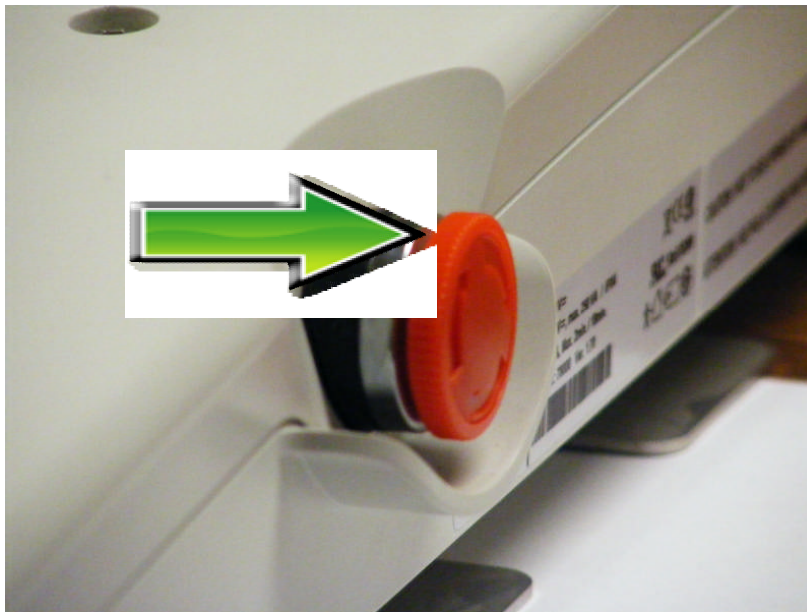
FULLY SEATED

If you have checked all the cords and the lift still doesn't move:

3. Make sure the "EMERGENCY STOP" button isn't depressed:
 - A. After you have fully charged the battery and checked the cords to make sure they are properly plugged in, look at the side of the ALL-IN-ONE unit and make sure the **red EMERGENCY STOP** button is "out", or not engaged. The photos below show the two positions.



THE LIFT **WILL** FUNCTION WITH THE "EMERGENCY STOP" BUTTON AS SHOWN.
PRESS FIRMLY TO STOP THE LIFT AT ANY TIME DURING OPERATION.



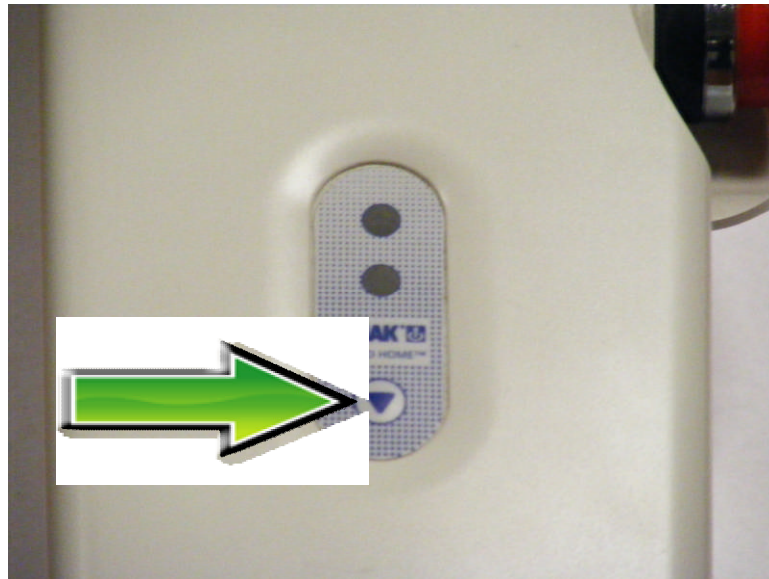
THE LIFT **WILL NOT** FUNCTION WITH THE "EMERGENCY STOP" AS SHOWN.
TURN THE BUTTON CLOCKWISE TO UNLOCK AND RESUME FUNCTION.

If the lift stops moving over the water and is stuck:

4. Try pushing the “EMERGENCY UP” button:

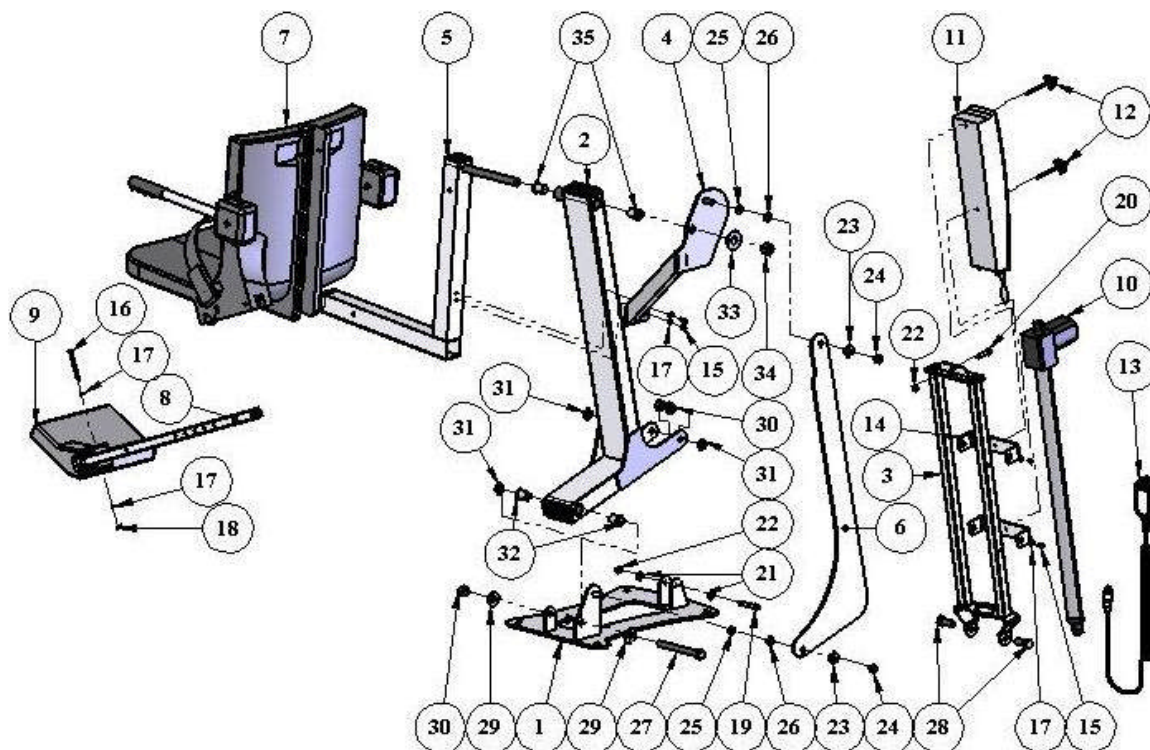
A. If the lift gets stuck out over the water press the “EMERGENCY UP” button and hold it down. Under normal conditions this will bypass the HANDSET and return the lift to the deck. Note that the lift will not return if the battery is not sufficiently charged or if the control unit is not working. The “EMERGENCY UP” button is normally used only when the HANDSET does not function.

NOTE: if the battery is fully charged and the plugs are fully seated (as described above) and the “EMERGENCY UP” button works but the HANDSET does not, chances are that the HANDSET is malfunctioning and may need to be replaced. Check the HANDSET and its cord and plug for damage or corrosion. Always keep the HANDSET, the cords and plugs, and the CONTROL unit clean and dry when not in use.



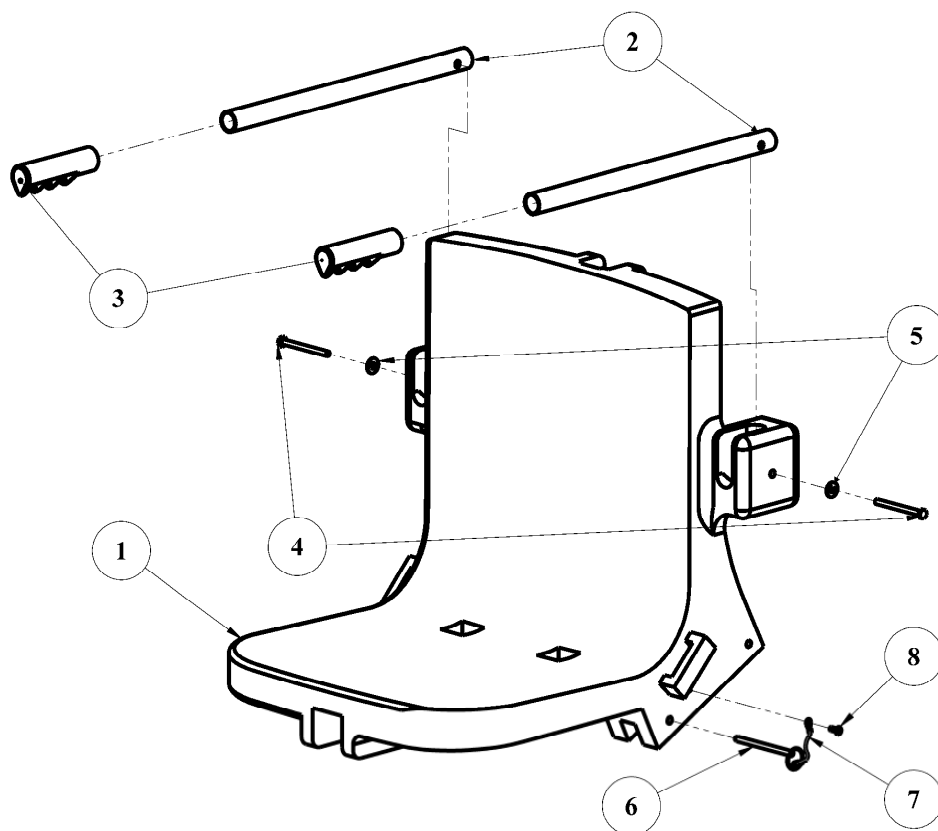
PRESS AND HOLD THE “EMERGENCY UP” BUTTON TO RETURN TO THE DECK WHEN THE HANDSET DOESN’T FUNCTION.

WARNING! NEVER STORE THE 24V CONTROL BOX OR THE HANDSET ON THE FLOOR OR IN A WET OR DAMP ENVIRONMENT. DO NOT LEAVE THEM OUTDOORS FOR EXTENDED PERIODS OF TIME. KEEP THEM AS CLEAN AND DRY AS POSSIBLE! REMOVE THE 24V CONTROL BOX BEFORE CLEANING THE LIFT. DO NOT SPRAY WATER DIRECTLY ONTO THE 24V CONTROL BOX!



RANGER™ POOL LIFT: PARTS LIST

ITEM#	QTY	DESCRIPTION	PART NUMBER
1	1	RANGER LIFT BASE	A-2011PPB
2	1	RANGER LIFT FRAME	A-0404PPF
3	1	RANGER LIFT ACTUATOR FRAME	A-8980PPAF
4	1	RANGER LIFT SEAT ROTATE ARM	P-2012SRS
5	1	RANGER LIFT SEAT ARM	A-2012ARM
6	1	RANGER LIFT CONTROL ARM	L-2014FBL
7	1	CHAIR ASSEMBLY	(SEE NEXT PG)
8	1	FOLDING FOOTREST TUBE	P-2035LEG
9	1	FOLDING FOOTREST	P-910
10	1	LINEAR ACTUATOR, 600mm, 24VDC	600mmACT
11	1	INTEGRATED CONTROL BOX/BATTERY, 2 CH	CBJH18000000004
12	1	WING BOLTS, 1/4" X 3" STAINLESS STEEL	WINGBOLTRANGER
13	1	HANDSET CONTROL, 2 CHANNEL	HB00U038-00
14	2	INTEGRATED BATTERY/CB BRACKET	RAA-UBK-00
15	6	1/4"-20 x 1/2" HEX BOLT, S.S.	BOLT1/4X1/2SSHEX
16	1	1/4"-20 x 3" HEX BOLT, S.S.	BOLT1/4X3SSHEX
17	6	1/4" FLAT WASHER, S.S.	FLATWASHER1/4SS
18	1	1/4"-20 NYLOCK NUT, S.S.	NYLOCK1/420SS
19	1	3/8"-16 x 2 1/2" HEX BOLT, S.S.	BOLT3/8X21/2SSHEX
20	1	3/8"-16 x 1 3/4" HEX BOLT, S.S.	BOLT3/8X13/4SSHEX
21	2	3/8" FLAT WASHER, S.S.	FLATWASHER3/8SS
22	2	3/8"-16 NYLOCK NUT, S.S.	NYLOCK3/816SS
23	2	1/2" FLAT WASHER, S.S.	FLATWASHER1/2SS
24	2	1/2"-13 NYLOCK NUT, S.S.	NYLOCK1/213SS
25	2	1/2" x 1/8" THRUST WASHER, BRONZE	TW1/2X1/8BRNZ
26	2	1/2" x 1/4" FLANGE BEARING, BRONZE	FB1/2X1/4BRNZ
27	1	5/8"-11 x 6" HEX BOLT, S.S.	BOLT5/8X6SSHEX
28	2	5/8"-11 x 1 1/2" HEX BOLT, S.S.	BOLT5/8X11/2SSHEX
29	4	5/8" FLAT WASHER, S.S.	FLATWASHER5/8SS
30	3	5/8"-11 NYLOCK NUT, S.S.	NYLOCK5/811SS
31	3	5/8" x 1/8" THRUST WASHER, BRONZE	TW5/8X1/8BRNZ
32	2	7/8" X 5/8" X 3/4" FLANGE BEARING, BRNZ	FB7/8X5/8X3/4BRNZ
33	1	3/4" FLAT WASHER, S.S.	FLATWASHER3/4SS
34	1	3/4"-10 NYLOCK NUT, S.S.	NYLOCK3/410SS
35	2	7/8" X 3/4" X 3/4" FLANGE BEARING, BRNZ	FB7/8X3/4X3/4BRNZ



SEAT ASSEMBLY: PARTS LIST

ITEM #	QTY	DESCRIPTION	PART NUMBER
1	1	SEAT BODY	F-132RC
2	2	SEAT ARMREST TUBE	SA-0904SAT
3	2	SEAT ARMREST HANDGRIP	RUBBERFINGERGRIPS
4	2	1/4"-20 x 3" HEX BOLT, S.S.	BOLT1/4X3SSHEX
5	2	1/4" FLAT WASHER, S.S.	FLATWASHER1/4SS
6	1	1/4" QUICK RELEASE PIN, S.S.	PIN1/4X3SS
7	1	LANYARD FOR QRP	LANYARD
8	1	SHEET METAL SCREW, S.S.	SA-0904SMS

Aqua Creek Products, LLC Limited Warranty: **RANGER™ Pool Lift - 24v Battery Powered**

Aqua Creek Products Ranger lifts have a **Limited 2-Year Warranty** on the frames, not including the powder coat finish.

Aqua Creek Products, LLC (a.k.a. Aqua Creek) also warrants to the original end user that all non-frame components manufactured by Aqua Creek, when properly installed in accordance with assembly and installation instructions, and properly used and maintained, shall be free from defects in material and workmanship for a period of two (2) years from the date of original purchase, provided that Aqua Creek receives prompt notice in writing of any defect or failure and satisfactory proof thereof.

This warranty specifically excludes reimbursement for labor to remove, repair, or install the product and any return freight charges.

These warranties do not cover any damages due to accident, misuse, abuse, negligence or failure to properly maintain any products, or normal wear and tear from day to day operations. In the event that any products are altered, repaired, or improperly installed or improperly used by anyone without the prior written approval by Aqua Creek, all warranties are void. **IMPORTANT: AMOUNT OF WEIGHT PLACED ON LIFT SHALL NOT EXCEED THE RATED LIFTING CAPACITY OF 300 POUNDS [136 kg] FOR THE RANGER POOL LIFT.**

To initiate a warranty claim, the owner of an Aqua Creek product must provide the place of purchase, in writing, with a full description of the product, its serial number, the dates of purchase and installation, and the exact nature of the defect. Within thirty (30) days after receipt of a written warranty claim by Aqua Creek, and barring any unforeseen delays, the place of purchase will be notified of Aqua Creek's decision regarding the claim.

If requested by Aqua Creek, any defective product must be returned, freight prepaid, to Aqua Creek's designated factory location or duly appointed distributor for inspection and/or repair. Aqua Creek will, at its option, repair or replace the failed or defective item, and deliver the repaired product or replacement to the buyer of the product, freight prepaid to the destination provided for in the original order. Products returned to Aqua Creek for which Aqua Creek provides replacement under this limited warranty shall become the property of Aqua Creek.

A new warranty period shall NOT be established for the repaired or replaced products. Such products shall remain under warranty only for the remainder of the original warranty period on the original products purchased.

This written limited warranty constitutes the final, complete and exclusive statement of warranty terms. No person or organization is authorized to make any other specific or implied warranties or representations on behalf of Aqua Creek.

THE WARRANTIES SET FORTH HEREIN ARE IN LIEU OF ALL OTHER WARRANTIES, EXPRESSED OR IMPLIED, WHICH ARE HEREBY DISCLAIMED AND EXCLUDED, INCLUDING WITHOUT LIMITATION ANY WARRANTY OF MERCHANTABILITY OR FITNESS FOR A PARTICULAR PURPOSE OR USE.

THE SOLE AND EXCLUSIVE REMEDIES FOR BREACH OF ANY AND ALL WARRANTIES WITH RESPECT TO THE PRODUCTS SHALL BE LIMITED TO REPAIR OR REPLACEMENT AT AQUA CREEK'S DESIGNATED FACTORY LOCATION, OR DULY APPOINTED DISTRIBUTOR, OR IN PLACE AT AQUA CREEK'S OPTION. IN NO EVENT SHALL AQUA CREEK'S LIABILITY EXCEED THE ENTIRE AMOUNT PAID TO AQUA CREEK BY THE ORIGINAL PURCHASER FOR THE FAILED OR DEFECTIVE PRODUCT.

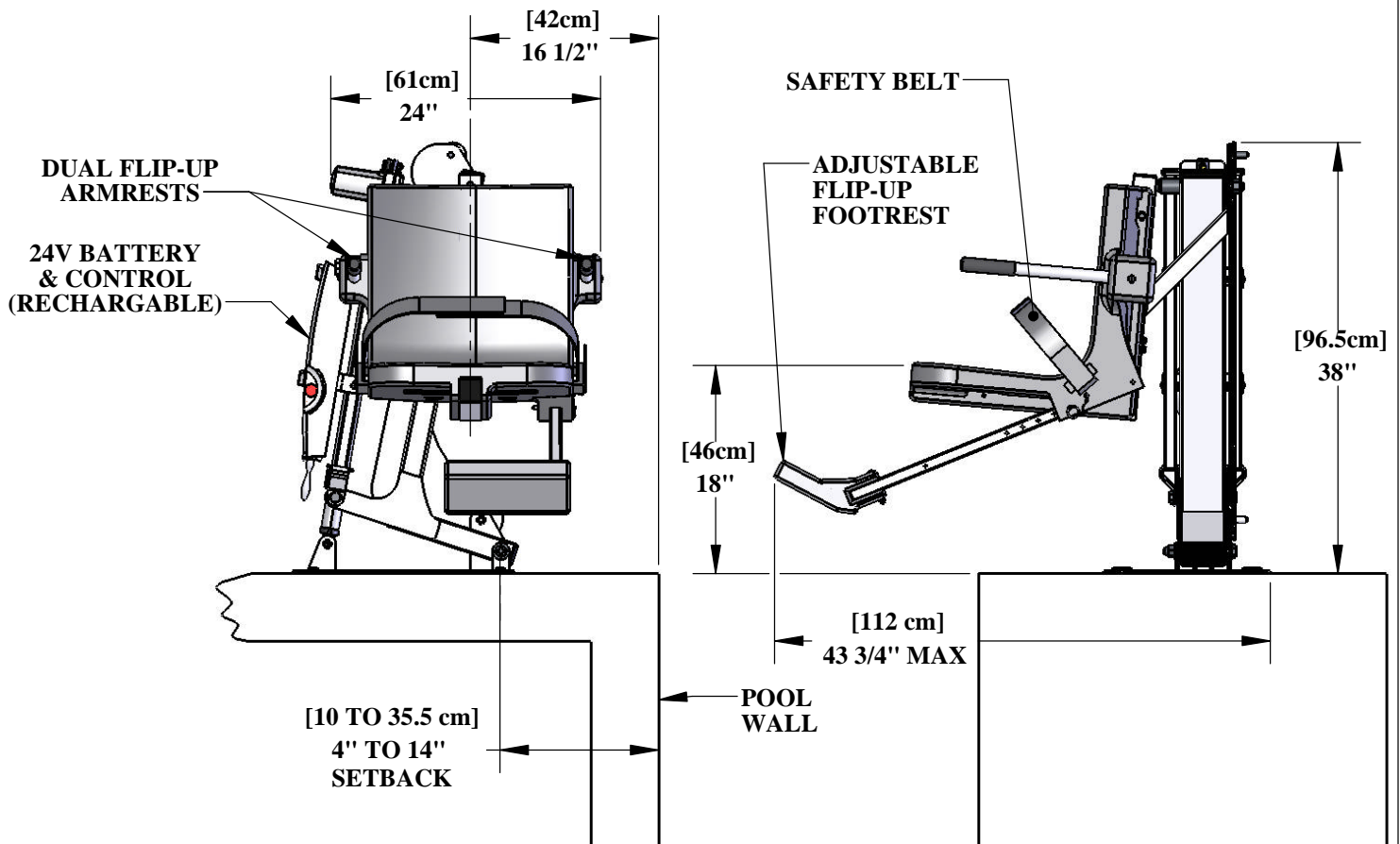
IN NO EVENT SHALL AQUA CREEK PRODUCTS, LLC BE LIABLE FOR ANY INCIDENTAL, CONSEQUENTIAL, SPECIAL, INDIRECT, PUNITIVE OR EXEMPLARY DAMAGES OR LOST PROFITS FROM ANY BREACH OF THIS LIMITED WARRANTY OR OTHERWISE.

THIS WARRANTY GIVES YOU SPECIFIC LEGAL RIGHTS AND YOU MAY ALSO HAVE OTHER RIGHTS, WHICH MAY VARY FROM STATE TO STATE.

SOME STATES DO NOT ALLOW THE EXCLUSION OR LIMITATION OF INCIDENTAL, SPECIAL OR CONSEQUENTIAL DAMAGES, SO SOME OF THE ABOVE LIMITATIONS OR EXCLUSIONS MAY NOT APPLY TO YOU.

Aqua Creek Products
9889 Garrymore Lane
Missoula, MT 59808

RANGER™ POOL LIFT



SPECIFICATIONS

THE AQUA CREEK RANGER POOL LIFT SHALL BE A 24V LINEAR ACTUATED, SELF OPERABLE, IN-GROUND POOL OR SPA LIFT. THE LIFT SHALL NOT INTRUDE INTO THE POOL OR SPA UNLESS IN USE. THE LIFT SHALL BE OF STAINLESS STEEL CONSTRUCTION AND DESIGNED TO LIFT 350 LBS [159 kgs] WITH A STATIC LOAD RATING OF 525 LBS [238 kgs]. AN 18" [45.7 cm] WIDE SEAT SHALL BE CAPABLE OF BEING SET BACK 16" [405 mm] FROM CENTERLINE OF SEAT TO POOL EDGE. A 24 VOLT WATERPROOF CONTROLLER SHALL BE USABLE BY THE OPERATOR OR AN ATTENDANT. AN INTEGRATED 24V RECHARGABLE BATTERY & CONTROL UNIT AND A BATTERY CHARGER SHALL COME STANDARD. THE LIFT SHALL INCLUDE A SEATBELT. THE LIFT SHALL CARRY A TWO (2) YEAR WARRANTY.

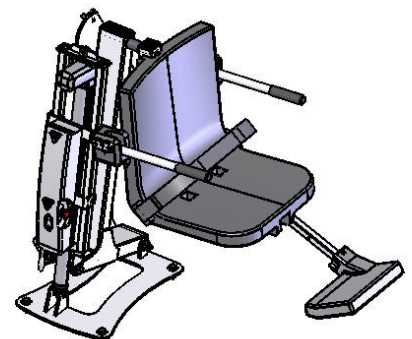
BASE PLATE: 1/4" STAINLESS STEEL TYPE 304
 MAIN HOUSING: 2" x 4" x .120" STAINLESS STEEL TUBE TYPE 304
 CHAIR AND FOOTREST: UV STABILIZED POLYETHYLENE (LLDPE)
 ACTUATOR: 24" STROKE LINAK LA34 LINEAR ACTUATOR
 FINISH: UV RESISTANT EPOXY POWDER COATING



Inspected And Verified To Meet
 Applicable Sections of ADA
 Guidelines Section 1009.2 By

wyle
 laboratories

An ISO 9001:2008
 Registered Laboratory



9889 GARRYMORE LANE
 MISSOULA, MT 59808
 (406) 549-0769
 FAX (406) 549-2602

NOTE:

*SPECIFICATIONS ARE SUBJECT TO CHANGE WITHOUT NOTICE
 *ALL DIMENSIONS ARE IN INCHES

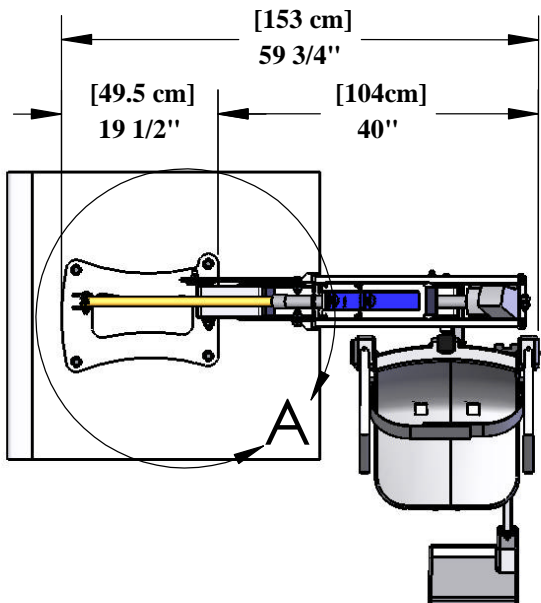
Aqua Creek Products

The Total Solution for Pool and Spa Access

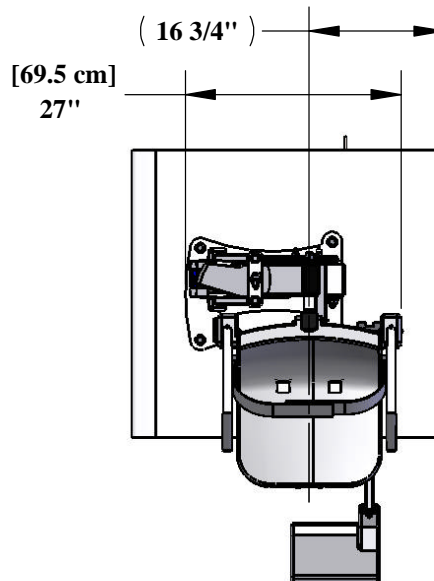
Compliments of www.poolsandstuff.com

PRODUCT:	F-411RPL-C		
DWG #:	F-411RPL-1		
SCALE:	1:18	DATE:	11/30/11
DRAWN BY:	DS	REVISION:	G

RANGER™ POOL LIFT

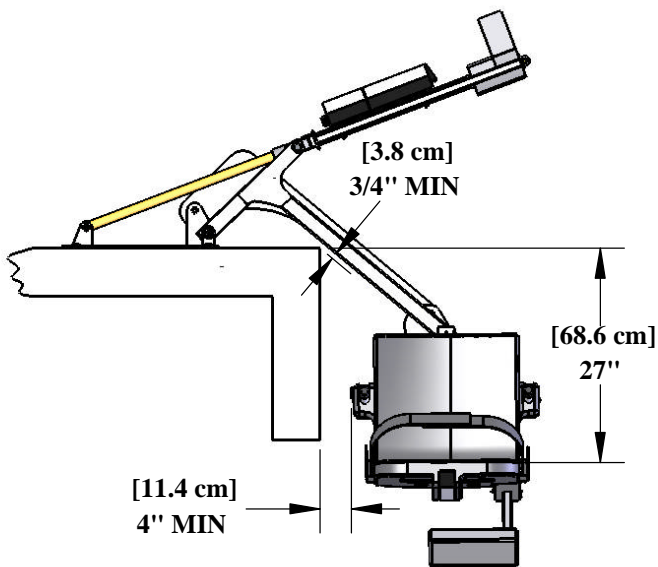


TOP VIEW



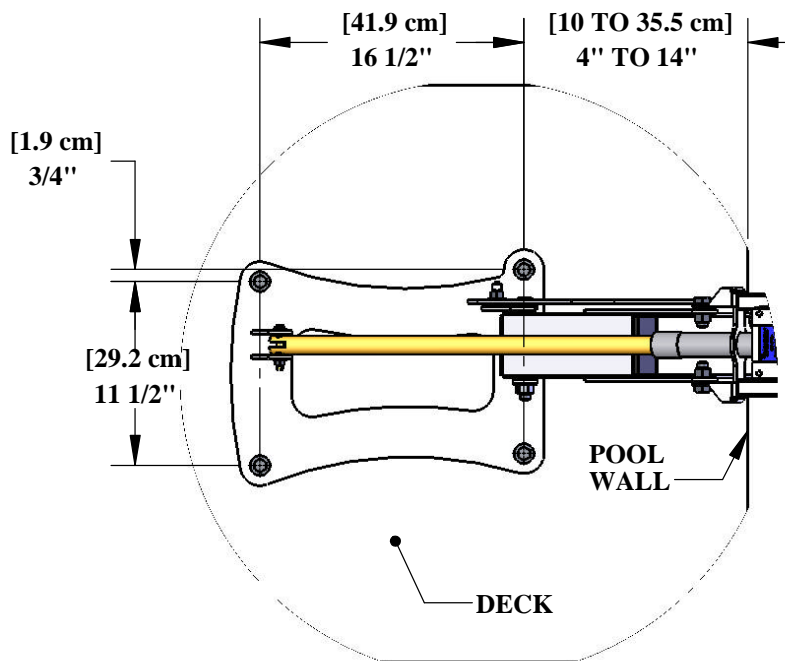
LIFT SHOWN IN FULLY RAISED POSITION

TOP VIEW



LIFT SHOWN IN FULLY LOWERED POSITION

FRONT VIEW



DETAIL A
SCALE 1 : 12

ANCHOR BOLT PATTERN

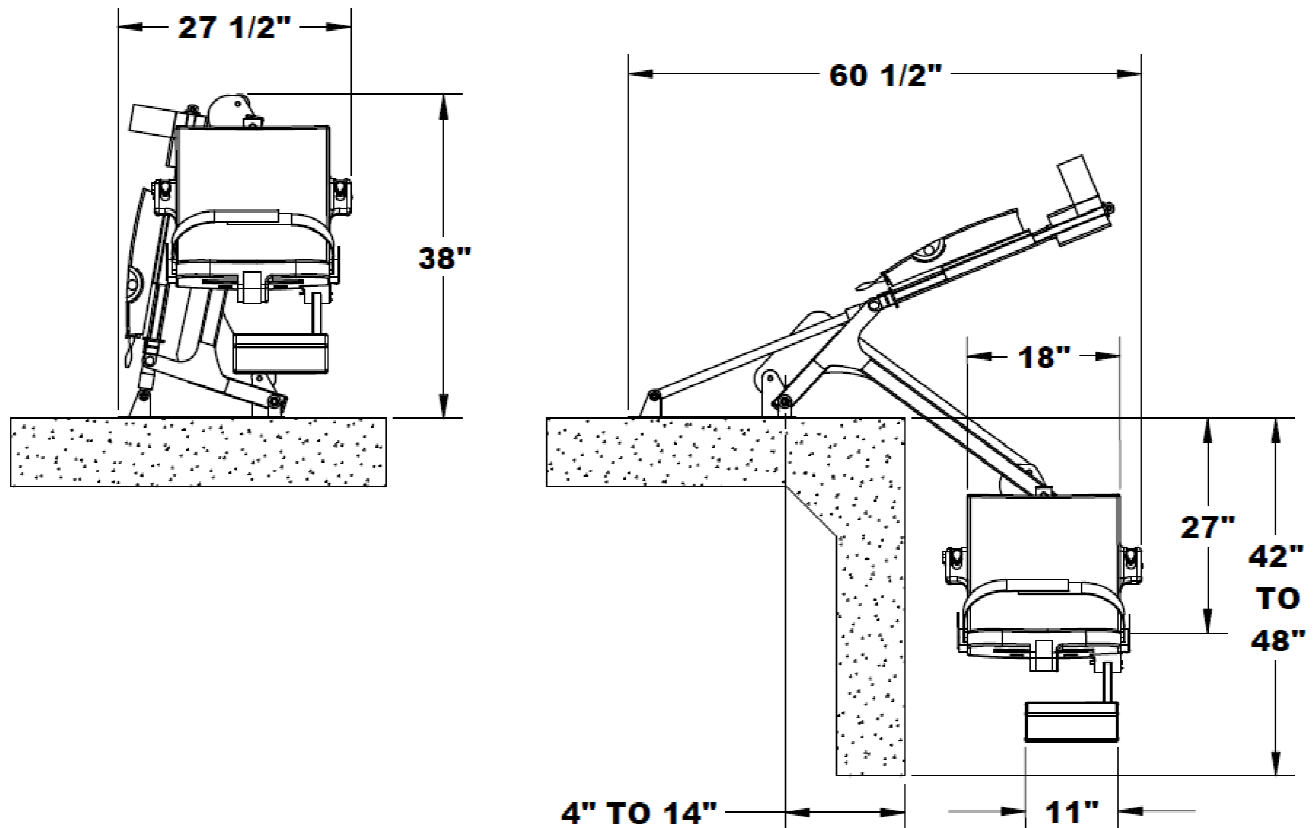


**9889 GARRYMORE LANE
MISSOULA, MT 59808
(406) 549-0769
FAX (406) 549-2602**

NOTE:
*SPECIFICATIONS ARE SUBJECT TO CHANGE WITHOUT NOTICE
*ALL DIMENSIONS ARE IN INCHES

PRODUCT:		F-411RPL-C
DWG #:		F-411RPL-2
SCALE:	1:24	DATE: 11/30/11
DRAWN BY:	DS	REVISION: G

RANGER LIFT DIMENSIONS & SPECIFICATIONS



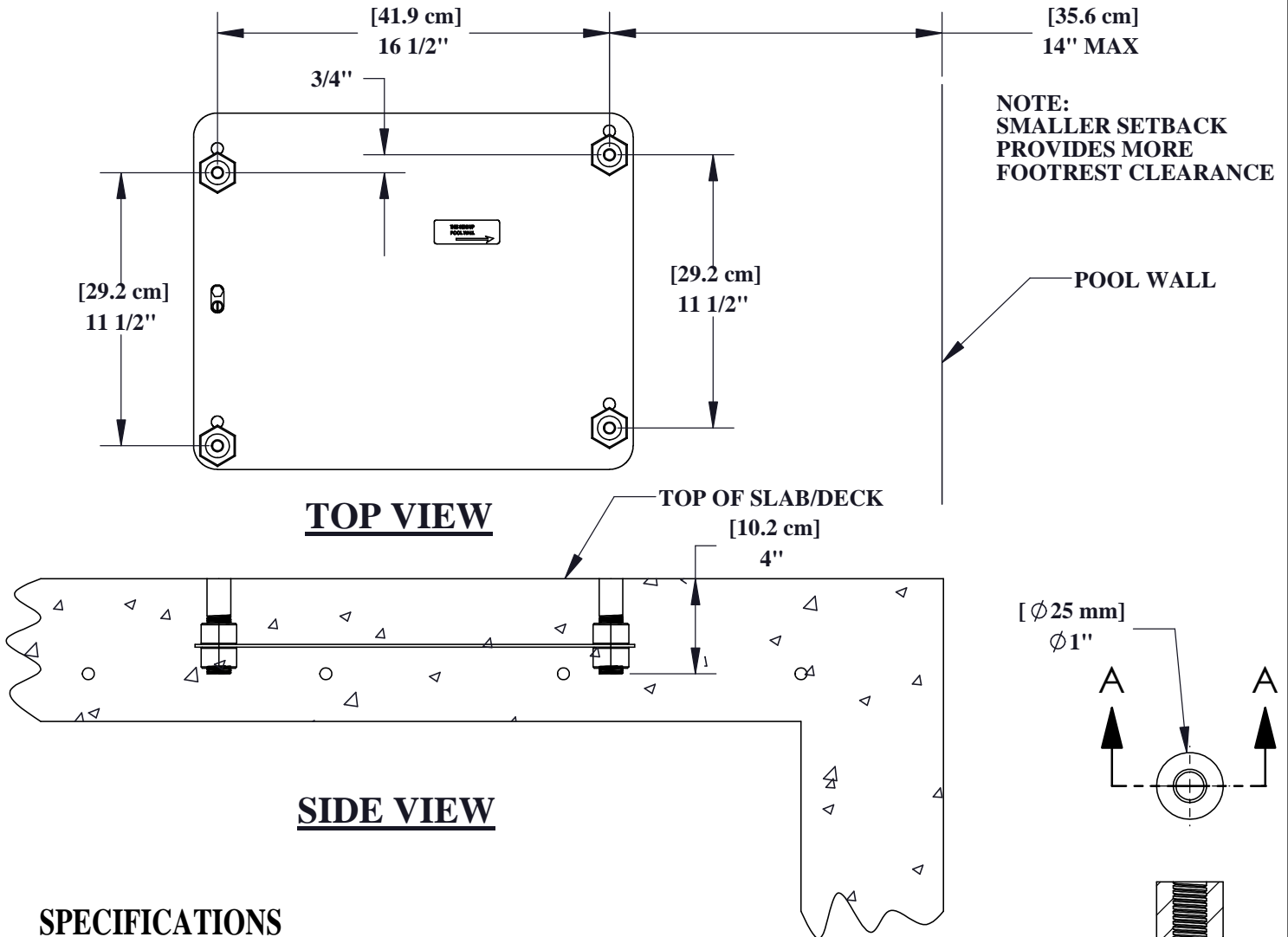
DIMENSIONS:

Height at deck level:	38" (97cm)
Width at deck level:	27-1/2" (69cm)
Total footprint on deck:	27-1/2" (69cm) wide x 46" (117cm) long
Set back range:	Maximum 14" (35cm) to center of front anchors
Lowering depth:	27" (69cm) to top of seat surface
Product weight:	120 Pounds (54kg)
Shipping weight:	200 Pounds (91kg)
Shipping Dimensions:	48" x 45" x 48" (122 x 114 x 122cm)
Shipping Method:	LTL Freight

SPECIFICATIONS:

Frame:	Stainless Steel (type 304)
Finish:	White UV Stabilized epoxy power coat
Actuator:	24v Electric Linear Actuator
Power:	Rechargeable 24v battery (120v Charger included with lift)
Controls:	Waterproof push button
Chair & Footrest:	UV Stabilized Polyethylene (LLDPE)
Weight capacity:	300 pounds (136kg)
Warranty:	2 year warranty

PRO POOL & RANGER LIFT ANCHOR



SPECIFICATIONS

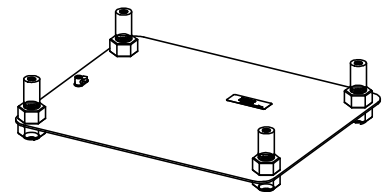
THE AQUA CREEK PRO POOL/RANGER ANCHOR ASSEMBLY SHALL CONSIST OF FOUR (4) 1" [25 mm] ANCHOR SOCKETS MOUNTED IN A 3/16" [5mm] JIG PLATE. THE ANCHOR SOCKETS SHALL BE ADJUSTABLE WITHIN THE JIG PLATE. THE ANCHOR SOCKETS SHALL BE REMOVABLE FOR RETRO-FIT PLACEMENT IN AN EXISTING POOL OR SPA DECK.

MANUFACTURER RECOMMENDS THAT THE ANCHOR ASSEMBLY BE GROUNDED PER LOCAL CODES.

ANCHOR SOCKET: Ø 1" [Ø 25 mm] TYPE 304 STAINLESS STEEL

ADJUSTING NUT: 1"-8 HEX NUT - TYPE 304 STAINLESS STEEL

JIG PLATE: 3/16" [4.8 mm] CARBON STEEL PLATE



9889 GARRYMORE LANE
MISSOULA, MT 59808
(406) 549-0769
FAX (406) 549-2602

NOTE:
*SPECIFICATIONS ARE SUBJECT TO CHANGE WITHOUT NOTICE
*ALL DIMENSIONS ARE IN INCHES


Aqua Creek Products
The Total Solution for Pool and Spa Access

PRODUCT:	F-433PP4A		
DWG #:	F-433PP4A-1		
SCALE:	1:6	DATE:	11/24/10
DRAWN BY:	DS	REVISION:	G

Compliments of www.poolsandstuff.com